

# Ly-6G Rabbit pAb

Ly-6G Rabbit pAb  
Catalog # AP94220

## Product Information

---

<b>Application</b>	WB
<b>Primary Accession</b>	<a href="#">P35461</a>
<b>Reactivity</b>	Mouse
<b>Host</b>	Rabbit
<b>Clonality</b>	Polyclonal
<b>Calculated MW</b>	14324
<b>Physical State</b>	Liquid
<b>Immunogen</b>	Recombinant mouse Ly-6G
<b>Isotype</b>	IgG
<b>Purity</b>	affinity purified by Protein A
<b>Buffer</b>	0.01M TBS (pH7.4) with 1% BSA, 0.02% Proclin300 and 50% Glycerol.
<b>SUBCELLULAR LOCATION</b>	Cell membrane; Lipid-anchor, GPI-anchor (By similarity).
<b>SIMILARITY</b>	Contains 1 UPAR/Ly6 domain.
<b>Important Note</b>	This product as supplied is intended for research use only, not for use in human, therapeutic or diagnostic applications.
<b>Background Descriptions</b>	Ly6G is a GPI-anchored protein, that is also known as the myeloid differentiation antigen Gr1. The antigen is transiently expressed on monocytes in the bone marrow. The level of antigen expression in the bone marrow directly correlates with granulocyte differentiation and maturation. Ly6G is expressed predominantly on neutrophils, also in a subset of eosinophils, differentiating pre-monocytes, and plasmacytoid dendritic cells.

## Additional Information

---

<b>Gene ID</b>	546644
<b>Other Names</b>	Lymphocyte antigen 6G, Ly-6G, Ly-6G.1, Ly6g
<b>Target/Specificity</b>	Expressed in bone marrow.
<b>Dilution</b>	WB=1:500-2000
<b>Format</b>	0.01M TBS(pH7.4) with 1% BSA, 0.09% (W/V) sodium azide and 50% Glyce
<b>Storage</b>	Store at -20 °C for one year. Avoid repeated freeze/thaw cycles. When reconstituted in sterile pH 7.4 0.01M PBS or diluent of antibody the antibody is stable for at least two weeks at 2-4 °C.

## Protein Information

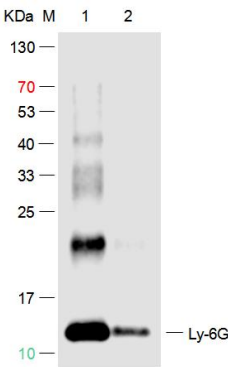
---

<b>Name</b>	Ly6g
<b>Cellular Location</b>	Cell membrane; Lipid-anchor, GPI- anchor
<b>Tissue Location</b>	Expressed in bone marrow.

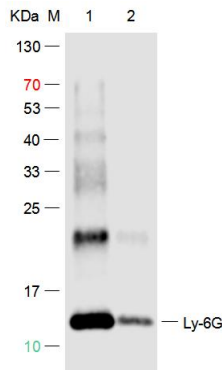
## Background

This product as supplied is intended for research use only, not for use in human, therapeutic or diagnostic applications.

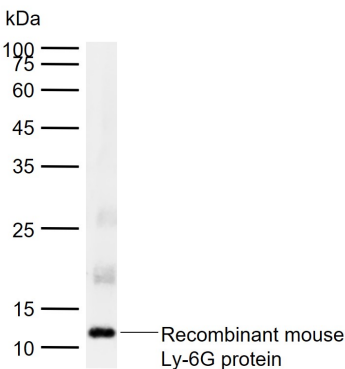
## Images



Sample: Lane 1:Recombinant Mouse Ly-6G Protein at 500ng Lane 2:Recombinant Mouse Ly-6G Protein at 50ng  
 Primary: Rabbit Anti-Ly-6G Polyclonal Antibody at 1/1000 dilution (Cat.AP94220) Secondary: IRDye800CW Goat Anti-Rabbit IgG at 1/20000 dilution Predicted band size: 14kD Observed band size: 13kD



Sample: Lane 1:Recombinant Mouse Ly-6G Protein at 500ng Lane 2:Recombinant Mouse Ly-6G Protein at 50ng  
 Primary: Rabbit Anti-Ly-6G Polyclonal Antibody at 1/1000 dilution (Cat.AP94220) Secondary: IRDye800CW Goat Anti-Rabbit IgG at 1/20000 dilution Predicted band size: 14kD Observed band size: 13kD



Sample: Lane 1: Recombinant mouse Ly-6G protein  
 Primary: Anti-Ly-6G (AP94220) at 1/1000 dilution  
 Secondary: IRDye800CW Goat Anti-Rabbit IgG at 1/20000 dilution Predicted band size: 14 kDa Observed band size: 12 kDa

Please note: All products are 'FOR RESEARCH USE ONLY. NOT FOR USE IN DIAGNOSTIC OR THERAPEUTIC PROCEDURES'.