

# Beta Actin (CAEEL) Rabbit pAb

Beta Actin (CAEEL) Rabbit pAb

Catalog # AP94219

## Product Information

---

<b>Application</b>	WB
<b>Host</b>	Rabbit
<b>Clonality</b>	Polyclonal
<b>Calculated MW</b>	42 KDa
<b>Physical State</b>	Liquid
<b>Immunogen</b>	Recombinant Caenorhabditis elegans Actin.
<b>Isotype</b>	IgG
<b>Purity</b>	affinity purified by Protein A
<b>Buffer</b>	0.01M TBS (pH7.4) with 1% BSA, 0.02% Proclin300 and 50% Glycerol.
<b>SUBCELLULAR LOCATION</b>	Cytoplasm, cytoskeleton.
<b>SIMILARITY</b>	Belongs to the actin family.
<b>Important Note</b>	This product as supplied is intended for research use only, not for use in human, therapeutic or diagnostic applications.

## Additional Information

---

<b>Dilution</b>	WB=1:500-2000
<b>Format</b>	0.01M TBS(pH7.4) with 1% BSA, 0.09% (W/V) sodium azide and 50% Glyce
<b>Storage</b>	Store at -20 °C for one year. Avoid repeated freeze/thaw cycles. When reconstituted in sterile pH 7.4 0.01M PBS or diluent of antibody the antibody is stable for at least two weeks at 2-4 °C.

## Background

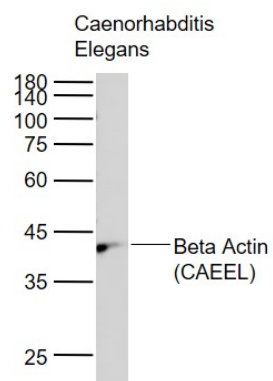
---

This product as supplied is intended for research use only, not for use in human, therapeutic or diagnostic applications.

## Images

---

Sample: Lane 1: Caenorhabditis Elegans tissue Lysate  
Primary: Anti-Beta Actin (CAEEL) (AP94219) at 1/1000  
dilution Secondary: IRDye800CW Goat Anti-Rabbit IgG at  
1/20000 dilution Predicted band size: 42 kD Observed  
band size: 42 kD



Please note: All products are 'FOR RESEARCH USE ONLY. NOT FOR USE IN DIAGNOSTIC OR THERAPEUTIC PROCEDURES'.