

Somatostatin Receptor 5 Rabbit pAb

Somatostatin Receptor 5 Rabbit pAb

Catalog # AP94213

Product Information

Application	WB
Primary Accession	O08858
Reactivity	Mouse
Host	Rabbit
Clonality	Polyclonal
Calculated MW	40008
Physical State	Liquid
Immunogen	KLH conjugated synthetic peptide derived from mouse Somatostatin Receptor 5
Epitope Specificity	1-100/362
Isotype	IgG
Purity	affinity purified by Protein A
Buffer	0.01M TBS (pH7.4) with 1% BSA, 0.02% Proclin300 and 50% Glycerol.
SUBCELLULAR LOCATION	Cell membrane; Multi-pass membrane protein.
SIMILARITY	Belongs to the G-protein coupled receptor 1 family.
Important Note	This product as supplied is intended for research use only, not for use in human, therapeutic or diagnostic applications.
Background Descriptions	Somatostatin and its related peptide cortistatin exert multiple biological actions on normal and tumoral tissue targets by interacting with somatostatin receptors (SSTRs). The protein encoded by this gene is one of the SSTRs, which is a multi-pass membrane protein and belongs to the G-protein coupled receptor 1 family. The activity of this receptor is mediated by G proteins which inhibit adenylyl cyclase, and different regions of this receptor molecule are required for the activation of different signaling pathways. A mutation in this gene results in somatostatin analog resistance. Alternatively spliced transcript variants have been identified in this gene.[provided by RefSeq, Feb 2010]

Additional Information

Gene ID	20609
Other Names	Somatostatin receptor type 5, SS-5-R, SS5-R, SS5R, Sstr5, Smstr5
Target/Specificity	Adult pituitary gland, heart, small intestine, adrenal gland, cerebellum and fetal hypothalamus. No expression in fetal or adult kidney, liver, pancreas, uterus, spleen, lung, thyroid or ovary.
Dilution	WB=1:500-2000
Format	0.01M TBS(pH7.4) with 1% BSA, 0.09% (W/V) sodium azide and 50% Glyce

Storage

Store at -20 °C for one year. Avoid repeated freeze/thaw cycles. When reconstituted in sterile pH 7.4 0.01M PBS or diluent of antibody the antibody is stable for at least two weeks at 2-4 °C.

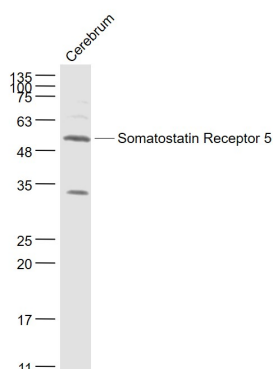
Protein Information

Name	Sstr5
Synonyms	Smstr5
Function	Receptor for somatostatin-28. The activity of this receptor is mediated by G proteins which inhibit adenylyl cyclase. Increases cell growth inhibition activity of SSTR2 following heterodimerization.
Cellular Location	Cell membrane; Multi-pass membrane protein
Tissue Location	Expressed in adult brain but not in liver, heart, spleen, or kidney.

Background

This product as supplied is intended for research use only, not for use in human, therapeutic or diagnostic applications.

Images



Sample: Cerebrum (Mouse) Lysate at 40 ug Primary: Anti-Somatostatin Receptor 5 (AP94213) at 1/1000 dilution
Secondary: IRDye800CW Goat Anti-Rabbit IgG at 1/20000 dilution Predicted band size: 39 kD Observed band size: 54 kD

Please note: All products are 'FOR RESEARCH USE ONLY. NOT FOR USE IN DIAGNOSTIC OR THERAPEUTIC PROCEDURES'.