

PPV VP2 Rabbit pAb

PPV VP2 Rabbit pAb

Catalog # AP94212

Product Information

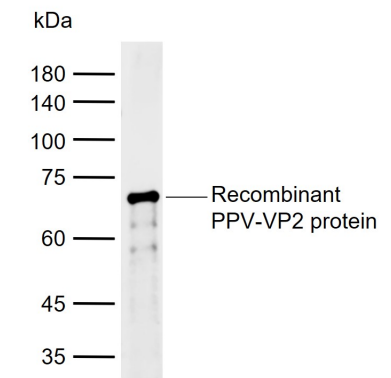
Application	WB, E
Host	Rabbit
Clonality	Polyclonal
Calculated MW	64 KDa
Physical State	Liquid
Immunogen	Recombinant PPV VP2 protein
Epitope Specificity	1-579/579
Isotype	IgG
Purity	affinity purified by Protein A
Buffer	0.01M TBS (pH7.4) with 1% BSA, 0.02% Proclin300 and 50% Glycerol.
SUBCELLULAR LOCATION	Host nucleus.
SIMILARITY	Belongs to the parvoviridae capsid protein family.
Important Note	This product as supplied is intended for research use only, not for use in human, therapeutic or diagnostic applications.
Background Descriptions	Porcine Parvovirus Infection (PPV) is the most common and important cause of infectious infertility. Porcine parvovirus is a fairly tough virus that multiplies normally in the intestine of the pig without causing clinical signs. It is world-wide in its distribution. If you test for it in your pig herd it is almost certain it will be present unless your herd is less than 100 sows when it might have died out. It is therefore an infection you have to live with and manage. Whereas most viruses do not survive outside the host for any great period of time PPV is unusual in that it can persist outside the pig for many months and it is resistant to most disinfectants. This perhaps explains why it is so widespread and so difficult to remove from the pig environment.

Additional Information

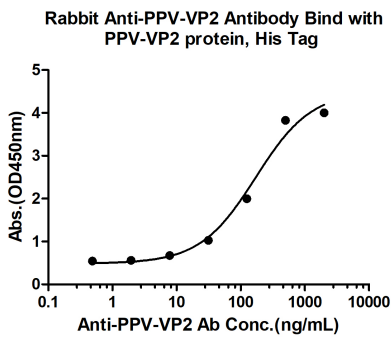
Dilution	WB=1:500-2000,ELISA=1:5000-10000
Format	0.01M TBS(pH7.4) with 1% BSA, 0.09% (W/V) sodium azide and 50% Glyce
Storage	Store at -20 °C for one year. Avoid repeated freeze/thaw cycles. When reconstituted in sterile pH 7.4 0.01M PBS or diluent of antibody the antibody is stable for at least two weeks at 2-4 °C.

Background

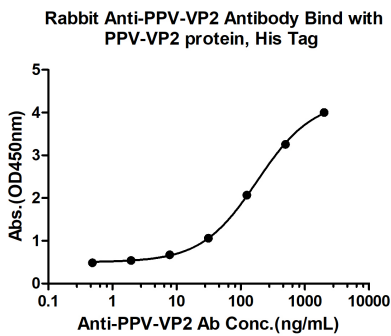
This product as supplied is intended for research use only, not for use in human, therapeutic or diagnostic applications.



Sample: Lane 1: Recombinant PPV-VP2 protein, N-His
Primary: Anti-PPV VP2 (AP94212) at 1/1000 dilution
Secondary: IRDye800CW Goat Anti-Rabbit IgG at 1/20000 dilution
Predicted band size: 64/81 kDa
Observed band size: 70 kDa



Measured by its binding ability in a indirect ELISA.
Immobilized recombinant PPV-VP2 protein, His Tag (Cat. bs-41390P) at 2 µg/mL (100 µL/well) can bind rabbit Anti-PPV-VP2 polyclonal antibody, the EC50 is 171.4 ng/mL.



Measured by its binding ability in a indirect ELISA.
Immobilized recombinant PPV-VP2 protein, His Tag (Cat. bs-41390P) at 2 µg/mL (100 µL/well) can bind rabbit Anti-PPV-VP2 polyclonal antibody, the EC50 is 181.0 ng/mL.

Please note: All products are 'FOR RESEARCH USE ONLY. NOT FOR USE IN DIAGNOSTIC OR THERAPEUTIC PROCEDURES'.