

NPAS2 Rabbit pAb

NPAS2 Rabbit pAb
Catalog # AP94210

Product Information

Application	WB, IHC-P, IHC-F, IF
Reactivity	Human
Host	Rabbit
Clonality	Polyclonal
Calculated MW	92 KDa
Physical State	Liquid
Immunogen	KLH conjugated synthetic peptide derived from human NPAS2
Epitope Specificity	631-730/824
Isotype	IgG
Purity	affinity purified by Protein A
Buffer	0.01M TBS (pH7.4) with 1% BSA, 0.02% Proclin300 and 50% Glycerol.
SUBCELLULAR LOCATION	Nucleus
Important Note	This product as supplied is intended for research use only, not for use in human, therapeutic or diagnostic applications.

Additional Information

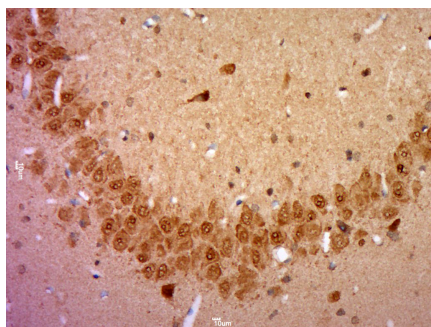
Dilution	WB=1:500-2000,IHC-P=1:100-500,IHC-F=1:100-500,IF=1:100-500
Format	0.01M TBS(pH7.4) with 1% BSA, 0.09% (W/V) sodium azide and 50% Glyce
Storage	Store at -20 °C for one year. Avoid repeated freeze/thaw cycles. When reconstituted in sterile pH 7.4 0.01M PBS or diluent of antibody the antibody is stable for at least two weeks at 2-4 °C.

Background

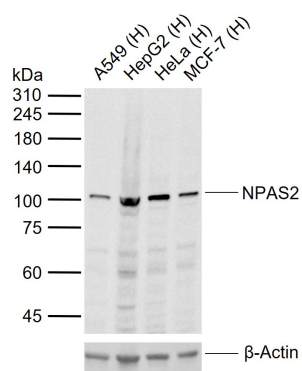
This product as supplied is intended for research use only, not for use in human, therapeutic or diagnostic applications.

Images

Paraformaldehyde-fixed, paraffin embedded (Rat brain);
Antigen retrieval by boiling in sodium citrate buffer
(pH6.0) for 15min; Block endogenous peroxidase by 3%
hydrogen peroxide for 20 minutes; Blocking buffer
(normal goat serum) at 37°C for 30min; Antibody
incubation with (Neuronal PAS domain-containing protein
2; NPAS2) Polyclonal Antibody, Unconjugated (AP94210)



at 1:400 overnight at 4°C, followed by a conjugated secondary (sp-0023) for 20 minutes and DAB staining.



Sample: Lane 1: Human A549 cell lysates Lane 2: Human HepG2 cell lysates Lane 3: Human HeLa cell lysates Lane 4: Human MCF-7 cell lysates Primary: Anti-NPAS2 (AP94210) at 1/1000 dilution Secondary: IRDye800CW Goat Anti-Rabbit IgG at 1/20000 dilution Predicted band size: 92 kDa Observed band size: 105 kDa

Please note: All products are 'FOR RESEARCH USE ONLY. NOT FOR USE IN DIAGNOSTIC OR THERAPEUTIC PROCEDURES'.