

INCA1 Rabbit pAb

INCA1 Rabbit pAb
Catalog # AP94206

Product Information

Application	WB
Reactivity	Human
Host	Rabbit
Clonality	Polyclonal
Calculated MW	27 KDa
Physical State	Liquid
Immunogen	KLH conjugated synthetic peptide derived from human INCA1
Epitope Specificity	131-236/236
Isotype	IgG
Purity	affinity purified by Protein A
Buffer	0.01M TBS (pH7.4) with 1% BSA, 0.02% Proclin300 and 50% Glycerol.
SUBCELLULAR LOCATION	Nucleus.
SIMILARITY	Belongs to the INCA family.
SUBUNIT	Interacts with CCNA1. Identified in a complex with CCNA1 and CDK2.
Post-translational modifications	Phosphorylated when part of a complex with CCNA1 and CDK2. Strongly phosphorylated by CDK2 on its C-terminal region spanning amino acid 149-221. Less intensively phosphorylated by CDK2 on its first 75 amino acid residues.
Important Note	This product as supplied is intended for research use only, not for use in human, therapeutic or diagnostic applications.
Background Descriptions	Tissue specificity: Detected in testis, and at lower levels in ovary. Detected at very low levels in testis tumors.

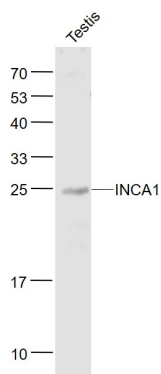
Additional Information

Dilution	WB=1:500-2000
Format	0.01M TBS(pH7.4) with 1% BSA, 0.09% (W/V) sodium azide and 50% Glyce
Storage	Store at -20 °C for one year. Avoid repeated freeze/thaw cycles. When reconstituted in sterile pH 7.4 0.01M PBS or diluent of antibody the antibody is stable for at least two weeks at 2-4 °C.

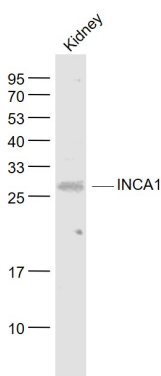
Background

This product as supplied is intended for research use only, not for use in human, therapeutic or diagnostic applications.

Images



Sample: Testis (Mouse) Lysate at 40 ug Primary: Anti-INCA1 (AP94206) at 1/1000 dilution Secondary: IRDye800CW Goat Anti-Rabbit IgG at 1/20000 dilution
Predicted band size: 27 kD Observed band size: 25 kD



Sample: Kidney (Mouse) Lysate at 40 ug Primary: Anti-INCA1 (AP94206) at 1/1000 dilution Secondary: IRDye800CW Goat Anti-Rabbit IgG at 1/20000 dilution
Predicted band size: 27 kD Observed band size: 27 kD

Please note: All products are 'FOR RESEARCH USE ONLY. NOT FOR USE IN DIAGNOSTIC OR THERAPEUTIC PROCEDURES'.