

CD14 Rabbit pAb

CD14 Rabbit pAb
Catalog # AP94199

Product Information

Application	WB
Reactivity	Mouse
Host	Rabbit
Clonality	Polyclonal
Calculated MW	35 KDa
Physical State	Liquid
Immunogen	KLH conjugated synthetic peptide derived from mouse CD14
Epitope Specificity	241-300/366
Isotype	IgG
Purity	affinity purified by Protein A
Buffer	0.01M TBS (pH7.4) with 1% BSA, 0.02% Proclin300 and 50% Glycerol.
SUBCELLULAR LOCATION	Cell membrane; Lipid-anchor, GPI-anchor.
SIMILARITY	Contains 11 LRR (leucine-rich) repeats.
SUBUNIT	Belongs to the lipopolysaccharide (LPS) receptor, a multi-protein complex containing at least CD14, MD-2 and TLR4.
Important Note	This product as supplied is intended for research use only, not for use in human, therapeutic or diagnostic applications.
Background Descriptions	The protein encoded by this gene is a surface antigen that is preferentially expressed on monocytes/macrophages. It cooperates with other proteins to mediate the innate immune response to bacterial lipopolysaccharide. Alternative splicing results in multiple transcript variants encoding the same protein. [provided by RefSeq, Mar 2010]

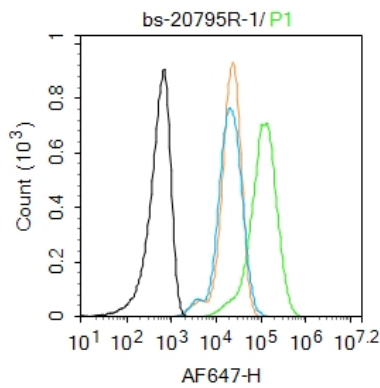
Additional Information

Dilution	WB=1:500-2000,Flow-Cyt=1ug/Test
Format	0.01M TBS(pH7.4) with 1% BSA, 0.09% (W/V) sodium azide and 50% Glyce
Storage	Store at -20 °C for one year. Avoid repeated freeze/thaw cycles. When reconstituted in sterile pH 7.4 0.01M PBS or diluent of antibody the antibody is stable for at least two weeks at 2-4 °C.

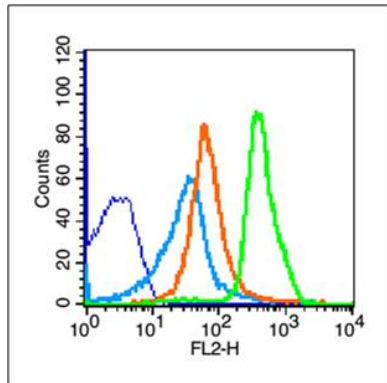
Background

This product as supplied is intended for research use only, not for use in human, therapeutic or diagnostic applications.

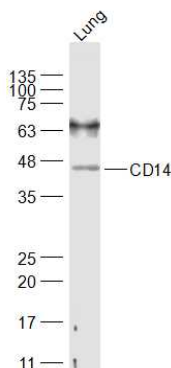
Images



Blank control: Raw264.7. Primary Antibody (green line): Rabbit Anti-CD14 antibody (AP94199) Dilution: 1 μg / 10^6 cells; Isotype Control Antibody (orange line): Rabbit IgG . Secondary Antibody : Goat anti-rabbit IgG-AF647 Dilution: 1 μg /test. Protocol The cells were fixed with 4% PFA (10min at room temperature)and then permeabilized with 0.1% PBST for 20 min at room temperature.The cells were then incubated in 5%BSA to block non-specific protein-protein interactions for 30 min at room temperature .Cells stained with Primary Antibody for 30 min at room temperature. The secondary antibody used for 40 min at room temperature. Acquisition of 20,000 events was performed.



Blank control (blue line): Mouse thymus cells (fixed with 70% methanol (Overnight at 4°C)). Primary Antibody (green line): Rabbit Anti-CD14 antibody (AP94199),Dilution: 3 μg / 10^6 cells; Isotype Control Antibody (orange line): Rabbit IgG . Secondary Antibody (white blue line): Goat anti-rabbit IgG-PE,Dilution: 1 μg /test.



Sample: Lung (Mouse) Lysate at 40 μg Primary: Anti-CD14 (AP94199) at 1/300 dilution Secondary: IRDye800CW Goat Anti-Rabbit IgG at 1/20000 dilution Predicted band size: 35/40 kD Observed band size: 42 kD

Please note: All products are 'FOR RESEARCH USE ONLY. NOT FOR USE IN DIAGNOSTIC OR THERAPEUTIC PROCEDURES'.