

# Schlafen 8 Rabbit pAb

Schlafen 8 Rabbit pAb

Catalog # AP94197

## Product Information

---

<b>Primary Accession</b>	<a href="#">B1ARD8</a>
<b>Reactivity</b>	Mouse
<b>Host</b>	Rabbit
<b>Clonality</b>	Polyclonal
<b>Calculated MW</b>	104264
<b>Physical State</b>	Liquid
<b>Immunogen</b>	KLH conjugated synthetic peptide derived from mouse Schlafen 8
<b>Epitope Specificity</b>	831-910/910
<b>Isotype</b>	IgG
<b>Purity</b>	affinity purified by Protein A
<b>Buffer</b>	0.01M TBS (pH7.4) with 1% BSA, 0.02% Proclin300 and 50% Glycerol.
<b>Important Note</b>	This product as supplied is intended for research use only, not for use in human, therapeutic or diagnostic applications.
<b>Background Descriptions</b>	The regulatory networks governing development and differentiation of hematopoietic cells are incompletely understood. Members of the Schlafen protein family have been implicated in the regulation of cell growth and T cell development. Four new members, Schlafen 5, Schlafen 8, Schlafen 9 and Schlafen 10, which belong to a distinct subgroup within this gene family have been identified and chromosomally mapped. The characteristic feature of these proteins is the presence of sequence motifs identifying them as distinct members of the superfamily I of DNA/RNA helicases.

## Additional Information

---

<b>Gene ID</b>	276950
<b>Other Names</b>	Schlafen family member 8, 3.1.-., Schlafen-8, mSLFN8, Slfn8 {ECO:0000303   PubMed:15351786, ECO:0000312   MGI:MGI:2672859}
<b>Dilution</b>	Flow-Cyt=1ug/Test
<b>Format</b>	0.01M TBS(pH7.4) with 1% BSA, 0.09% (W/V) sodium azide and 50% Glyce
<b>Storage</b>	Store at -20 °C for one year. Avoid repeated freeze/thaw cycles. When reconstituted in sterile pH 7.4 0.01M PBS or diluent of antibody the antibody is stable for at least two weeks at 2-4 °C.

## Protein Information

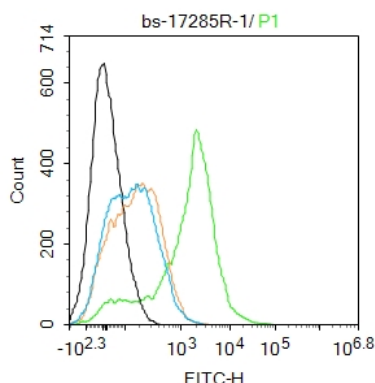
---

<b>Name</b>	Slfn8 {ECO:0000303   PubMed:15351786, ECO:0000312   MGI:MGI:2672859}
<b>Function</b>	Endoribonuclease that cleaves tRNAs and rRNAs (PubMed: <a href="#">29563550</a> ). Cleaves tRNAs 11 nucleotides from the 3'-terminus at the acceptor stem (PubMed: <a href="#">29563550</a> ). May be involved in immune system via regulation of inflammation (PubMed: <a href="#">29528433</a> ).
<b>Cellular Location</b>	Cytoplasm {ECO:0000250   UniProtKB:Q68D06}.
<b>Tissue Location</b>	In T-cells, expressed at relatively constant levels during development: expressed in immature CD3(-)CD4(-)CD8(-) T-cells (DN stage), in CD4(+)CD8(+) double-positive stage (DP) and mature CD4(+) or CD8(+) thymocytes. Expression is slightly reduced at the DP stage.

## Background

This product as supplied is intended for research use only, not for use in human, therapeutic or diagnostic applications.

## Images



Blank control: Mouse spleen. Primary Antibody (green line): Rabbit Anti-Schlafen 8 antibody (AP94197) Dilution: 1ug/Test; Secondary Antibody : Goat anti-rabbit IgG-FITC Dilution: 0.5ug/Test. Protocol The cells were fixed with 4% PFA (10min at room temperature) and then permeabilized with 0.1% PBST for 20 min at room temperature. The cells were then incubated in 5% BSA to block non-specific protein-protein interactions for 30 min at room temperature. Cells stained with Primary Antibody for 30 min at room temperature. The secondary antibody used for 40 min at room temperature. Acquisition of 20,000 events was performed.

Please note: All products are 'FOR RESEARCH USE ONLY. NOT FOR USE IN DIAGNOSTIC OR THERAPEUTIC PROCEDURES'.