

# PPHLN1 Rabbit pAb

PPHLN1 Rabbit pAb

Catalog # AP94165

## Product Information

---

<b>Application</b>	WB, IHC-P, IHC-F, IF
<b>Primary Accession</b>	<a href="#">Q8NEY8</a>
<b>Reactivity</b>	Human
<b>Host</b>	Rabbit
<b>Clonality</b>	Polyclonal
<b>Calculated MW</b>	53 KDa
<b>Physical State</b>	Liquid
<b>Immunogen</b>	KLH conjugated synthetic peptide derived from human PPHLN1
<b>Epitope Specificity</b>	301-400/458
<b>Isotype</b>	IgG
<b>Purity</b>	affinity purified by Protein A
<b>Buffer</b>	0.01M TBS (pH7.4) with 1% BSA, 0.02% Proclin300 and 50% Glycerol.
<b>SUBCELLULAR LOCATION</b>	Nucleus. Cytoplasm.
<b>SUBUNIT</b>	Homodimer. Interacts with PPL.
<b>Post-translational modifications</b>	Substrate of transglutaminase (in vitro).
<b>Important Note</b>	This product as supplied is intended for research use only, not for use in human, therapeutic or diagnostic applications.
<b>Background Descriptions</b>	Involved in epithelial differentiation and contributes to epidermal integrity and barrier formation.

## Additional Information

---

<b>Other Names</b>	Periphilin-1, CDC7 expression repressor, CR, Gastric cancer antigen Ga50, PPHLN1 ( <a href="#">HGNC:19369</a> )
<b>Target/Specificity</b>	Ubiquitous.
<b>Dilution</b>	WB=1:500-2000,IHC-P=1:100-500,IHC-F=1:100-500,IF=1:100-500
<b>Format</b>	0.01M TBS(pH7.4) with 1% BSA, 0.09% (W/V) sodium azide and 50% Glyce
<b>Storage</b>	Store at -20 °C for one year. Avoid repeated freeze/thaw cycles. When reconstituted in sterile pH 7.4 0.01M PBS or diluent of antibody the antibody is stable for at least two weeks at 2-4 °C.

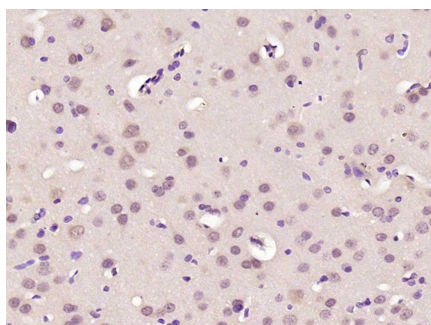
## Protein Information

---

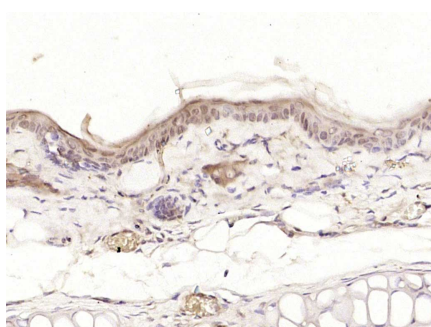
## Background

This product as supplied is intended for research use only, not for use in human, therapeutic or diagnostic applications.

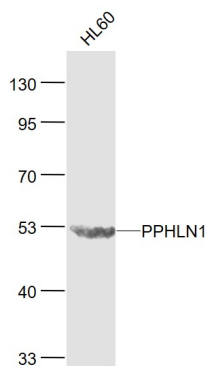
## Images



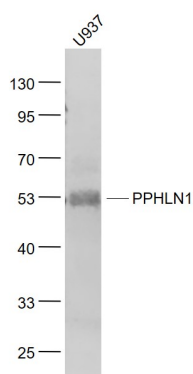
Paraformaldehyde-fixed, paraffin embedded (rat brain); Antigen retrieval by boiling in sodium citrate buffer (pH6.0) for 15min; Block endogenous peroxidase by 3% hydrogen peroxide for 20 minutes; Blocking buffer (normal goat serum) at 37°C for 30min; Antibody incubation with (PPHLN1) Polyclonal Antibody, Unconjugated (AP94165) at 1:200 overnight at 4°C, followed by operating according to SP Kit(Rabbit) (sp-0023) instructions and DAB staining.



Paraformaldehyde-fixed, paraffin embedded (rat skin); Antigen retrieval by boiling in sodium citrate buffer (pH6.0) for 15min; Block endogenous peroxidase by 3% hydrogen peroxide for 20 minutes; Blocking buffer (normal goat serum) at 37°C for 30min; Antibody incubation with (PPHLN1) Polyclonal Antibody, Unconjugated (AP94165) at 1:200 overnight at 4°C, followed by operating according to SP Kit(Rabbit) (sp-0023) instructions and DAB staining.



Sample: HL60 (Human) Cell Lysate at 30 ug Primary: Anti-PPHLN1 (AP94165) at 1/1000 dilution Secondary: IRDye800CW Goat Anti-Rabbit IgG at 1/20000 dilution Predicted band size: 53 kD Observed band size: 53 kD



Sample: U937(Human) Cell Lysate at 30 ug Primary: Anti-PPHLN1 (AP94165) at 1/1000 dilution Secondary: IRDye800CW Goat Anti-Rabbit IgG at 1/20000 dilution Predicted band size: 53 kD Observed band size: 53 kD

Please note: All products are 'FOR RESEARCH USE ONLY. NOT FOR USE IN DIAGNOSTIC OR THERAPEUTIC PROCEDURES'.