

DHX30 Rabbit pAb

DHX30 Rabbit pAb
Catalog # AP94155

Product Information

Application	IHC-P, IHC-F, IF
Primary Accession	Q7L2E3-2
Reactivity	Human
Host	Rabbit
Clonality	Polyclonal
Calculated MW	134 KDa
Physical State	Liquid
Immunogen	KLH conjugated synthetic peptide derived from human DHX30
Epitope Specificity	1-100/194
Isotype	IgG
Purity	affinity purified by Protein A
Buffer	0.01M TBS (pH7.4) with 1% BSA, 0.02% Proclin300 and 50% Glycerol.
SUBCELLULAR LOCATION	Cytoplasm and Mitochondrion. Cytoplasm. Mitochondrion matrix > mitochondrion nucleoid.
SIMILARITY	Belongs to the DEAD box helicase family. DEAH subfamily. Contains 1 DRBM (double-stranded RNA-binding) domain. Contains 1 helicase ATP-binding domain. Contains 1 helicase C-terminal domain.
Post-translational modifications	Isoform 2 is phosphorylated on Ser-15.
Important Note	This product as supplied is intended for research use only, not for use in human, therapeutic or diagnostic applications.
Background Descriptions	DEAD box proteins, characterized by the conserved motif Asp-Glu-Ala-Asp (DEAD), are putative RNA helicases. They are implicated in a number of cellular processes involving alteration of RNA secondary structure such as translation initiation, nuclear and mitochondrial splicing, and ribosome and spliceosome assembly. Based on their distribution patterns, some members of this DEAD box protein family are believed to be involved in embryogenesis, spermatogenesis, and cellular growth and division. The family member encoded by this gene is a mitochondrial nucleoid protein that associates with mitochondrial DNA. It has also been identified as a component of a transcriptional repressor complex that functions in retinal development, and it is required to optimize the function of the zinc-finger antiviral protein. Alternatively spliced transcript variants have been found for this gene. [provided by RefSeq, Feb 2013]

Additional Information

Dilution	IHC-P=1:100-500,IHC-F=1:100-500,IF=1:100-500
Format	0.01M TBS(pH7.4) with 1% BSA, 0.09% (W/V) sodium azide and 50% Glyce

Storage

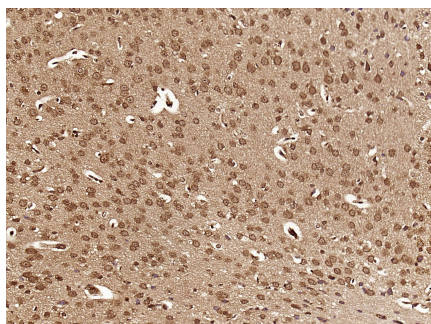
Store at -20 °C for one year. Avoid repeated freeze/thaw cycles. When reconstituted in sterile pH 7.4 0.01M PBS or diluent of antibody the antibody is stable for at least two weeks at 2-4 °C.

Protein Information

Background

This product as supplied is intended for research use only, not for use in human, therapeutic or diagnostic applications.

Images



Paraformaldehyde-fixed, paraffin embedded (Mouse brain); Antigen retrieval by boiling in sodium citrate buffer (pH6.0) for 15min; Block endogenous peroxidase by 3% hydrogen peroxide for 20 minutes; Blocking buffer (normal goat serum) at 37°C for 30min; Antibody incubation with (DHX30) Polyclonal Antibody, Unconjugated (AP94155) at 1:500 overnight at 4°C, followed by a conjugated secondary (sp-0023) for 20 minutes and DAB staining.

Please note: All products are 'FOR RESEARCH USE ONLY. NOT FOR USE IN DIAGNOSTIC OR THERAPEUTIC PROCEDURES'.