

NPY1R Rabbit pAb

NPY1R Rabbit pAb
Catalog # AP94143

Product Information

Application	WB
Primary Accession	Q04573
Reactivity	Mouse
Host	Rabbit
Clonality	Polyclonal
Calculated MW	44015
Physical State	Liquid
Immunogen	KLH conjugated synthetic peptide derived from mouse NPY1R
Epitope Specificity	151-250/382
Isotype	IgG
Purity	affinity purified by Protein A
Buffer	0.01M TBS (pH7.4) with 1% BSA, 0.02% Proclin300 and 50% Glycerol.
SUBCELLULAR LOCATION	Cell membrane.
SIMILARITY	Belongs to the G-protein coupled receptor 1 family.
Important Note	This product as supplied is intended for research use only, not for use in human, therapeutic or diagnostic applications.
Background Descriptions	Neuropeptide Y (NPY) is one of the most abundant neuropeptides in the mammalian nervous system and exhibits a diverse range of important physiologic activities, including effects on psychomotor activity, food intake, regulation of central endocrine secretion, and potent vasoactive effects on the cardiovascular system. There are two major subtypes of NPY (Y1 and Y2). The NPY Y1 receptors have been identified in a variety of tissues, including brain, spleen, small intestine, kidney, testis, placenta, breast, colon, ganglion, heart, and aortic smooth muscle. The Y2 receptor is found mainly in the central nervous system. NPY receptors are a member of the G protein-coupled receptor superfamily.

Additional Information

Gene ID	18166
Other Names	Neuropeptide Y receptor type 1, NPY1-R, Npy1r
Dilution	WB=1:500-2000
Format	0.01M TBS(pH7.4) with 1% BSA, 0.09% (W/V) sodium azide and 50% Glyce
Storage	Store at -20 °C for one year. Avoid repeated freeze/thaw cycles. When reconstituted in sterile pH 7.4 0.01M PBS or diluent of antibody the antibody is stable for at least two weeks at 2-4 °C.

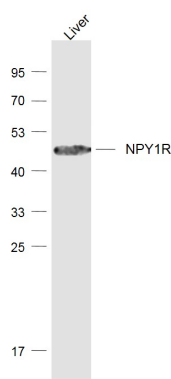
Protein Information

Name	Npy1r
Function	Receptor for neuropeptide Y and peptide YY.
Cellular Location	Cell membrane; Multi-pass membrane protein.
Tissue Location	The alpha form is highly expressed in the brain, heart, kidney, spleen, skeletal muscle, and lung, whereas the beta receptor mRNA was not detected in these tissues. However, the beta form is expressed in mouse embryonic developmental stage (7 and 11 days), bone marrow cells and several hematopoietic cell lines

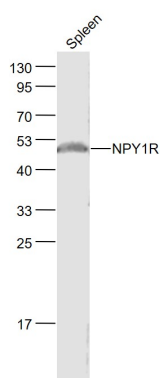
Background

This product as supplied is intended for research use only, not for use in human, therapeutic or diagnostic applications.

Images



Sample: Liver (Mouse) Lysate at 40 ug Primary: Anti-NPY1R (AP94143) at 1/1000 dilution Secondary: IRDye800CW Goat Anti-Rabbit IgG at 1/20000 dilution Predicted band size: 44 kD Observed band size: 44 kD



Sample: Spleen (Mouse) Lysate at 40 ug Primary: Anti-NPY1R (AP94143) at 1/1000 dilution Secondary: IRDye800CW Goat Anti-Rabbit IgG at 1/20000 dilution Predicted band size: 44 kD Observed band size: 48 kD

Please note: All products are 'FOR RESEARCH USE ONLY. NOT FOR USE IN DIAGNOSTIC OR THERAPEUTIC PROCEDURES'.