

# Involucrin Rabbit pAb

Involucrin Rabbit pAb

Catalog # AP94141

## Product Information

---

<b>Application</b>	WB
<b>Primary Accession</b>	<a href="#">P48997</a>
<b>Reactivity</b>	Mouse
<b>Host</b>	Rabbit
<b>Clonality</b>	Polyclonal
<b>Calculated MW</b>	54919
<b>Physical State</b>	Liquid
<b>Immunogen</b>	KLH conjugated synthetic peptide derived from mouse Involucrin
<b>Epitope Specificity</b>	21-120/467
<b>Isotype</b>	IgG
<b>Purity</b>	affinity purified by Protein A
<b>Buffer</b>	0.01M TBS (pH7.4) with 1% BSA, 0.02% Proclin300 and 50% Glycerol.
<b>SUBCELLULAR LOCATION</b>	Cytoplasm.
<b>SIMILARITY</b>	Belongs to the involucrin family.
<b>SUBUNIT</b>	Directly or indirectly cross-linked to cornifelin (CNFN).
<b>Post-translational modifications</b>	Substrate of transglutaminase. Some glutamines and lysines are cross-linked to other involucrin molecules, to other proteins such as keratin, desmoplakin, periplakin and envoplakin, and to lipids like omega-hydroxyceramide.
<b>Important Note</b>	This product as supplied is intended for research use only, not for use in human, therapeutic or diagnostic applications.
<b>Background Descriptions</b>	Involucrin, a component of the keratinocyte crosslinked envelope, is found in the cytoplasm and crosslinked to membrane proteins by transglutaminase. This gene is mapped to 1q21, among calpactin I light chain, trichohyalin, profillaggrin, loricrin, and calcyclin. [provided by RefSeq, Jul 2008].

## Additional Information

---

<b>Other Names</b>	Involucrin, Iv1
<b>Target/Specificity</b>	Keratinocytes of epidermis and other stratified squamous epithelia.
<b>Dilution</b>	WB=1:500-2000
<b>Format</b>	0.01M TBS(pH7.4) with 1% BSA, 0.09% (W/V) sodium azide and 50% Glyce
<b>Storage</b>	Store at -20 °C for one year. Avoid repeated freeze/thaw cycles. When reconstituted in sterile pH 7.4 0.01M PBS or diluent of antibody the antibody is stable for at least two weeks at 2-4 °C.

## Protein Information

---

<b>Name</b>	Ivl
<b>Function</b>	Part of the insoluble cornified cell envelope (CE) of stratified squamous epithelia.
<b>Cellular Location</b>	Cytoplasm. Note=Constituent of the scaffolding of the cornified envelope
<b>Tissue Location</b>	Keratinocytes of epidermis and other stratified squamous epithelia

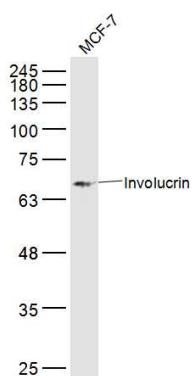
## Background

---

This product as supplied is intended for research use only, not for use in human, therapeutic or diagnostic applications.

## Images

---



Sample: MCM-7(Human) Cell Lysate at 30 ug Primary:  
Anti-Involucrin (AP94141) at 1/300 dilution Secondary:  
IRDye800CW Goat Anti-Rabbit IgG at 1/20000 dilution  
Predicted band size: 64 kD Observed band size: 64 kD

Please note: All products are 'FOR RESEARCH USE ONLY. NOT FOR USE IN DIAGNOSTIC OR THERAPEUTIC PROCEDURES'.