

# PI3 Kinase p110 beta Rabbit pAb

PI3 Kinase p110 beta Rabbit pAb

Catalog # AP94117

## Product Information

---

<b>Application</b>	WB, IHC-P, IHC-F, IF, E
<b>Primary Accession</b>	<a href="#">Q24JU2</a>
<b>Reactivity</b>	Human
<b>Host</b>	Rabbit
<b>Clonality</b>	Polyclonal
<b>Calculated MW</b>	123 KDa
<b>Physical State</b>	Liquid
<b>Immunogen</b>	KLH conjugated synthetic peptide derived from human PI3 Kinase p110 beta
<b>Isotype</b>	IgG
<b>Purity</b>	affinity purified by Protein A
<b>Buffer</b>	0.01M TBS (pH7.4) with 1% BSA, 0.02% Proclin300 and 50% Glycerol.
<b>SUBCELLULAR LOCATION</b>	Cytoplasm. Nucleus. Note=Interaction with PIK3R2 is required for nuclear localization and export.
<b>SIMILARITY</b>	Belongs to the PI3/PI4-kinase family.Contains 1 C2 PI3K-type domain.Contains 1 PI3K-ABD domain.Contains 1 PI3K-RBD domain.Contains 1 PI3K/PI4K domain.Contains 1 PIK helical domain.
<b>SUBUNIT</b>	PIK3R2 or PIK3R3). Interaction with PIK3R2 is required for nuclear localization and nuclear export. Part of a complex with PIK3R1 and PTEN. Binding to PTEN may antagonize the lipid kinase activity under normal growth conditions. Part of a complex involved in autophagosome formation composed of PIK3C3 and PIK3R4. Interacts with BECN1, ATG14 and RAB5A.
<b>Post-translational modifications</b>	Phosphorylation at Ser-1070 down-regulates lipid kinase activity.
<b>Important Note</b>	This product as supplied is intended for research use only, not for use in human, therapeutic or diagnostic applications.
<b>Background Descriptions</b>	This gene encodes an isoform of the catalytic subunit of phosphoinositide 3-kinase (PI3K). These kinases are important in signaling pathways involving receptors on the outer membrane of eukaryotic cells and are named for their catalytic subunit. The encoded protein is the catalytic subunit for PI3Kbeta (PI3KB). PI3KB has been shown to be part of the activation pathway in neutrophils which have bound immune complexes at sites of injury or infection. Alternative splicing results in multiple transcript variants. [provided by RefSeq, Dec 2011].

## Additional Information

---

<b>Target/Specificity</b>	Expressed ubiquitously.
<b>Dilution</b>	WB=1:500-1000,IHC-P=1:50-200,IHC-F=1:50-200,IF=1:50-200,Flow-Cyt=3ug/test,ELISA=1:5000-10000

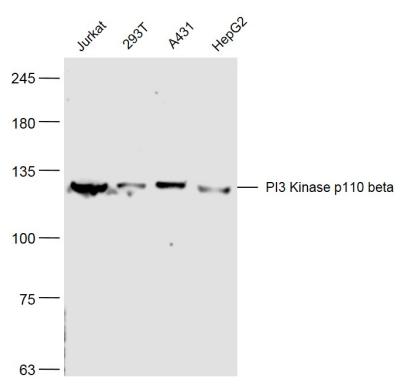
<b>Format</b>	0.01M TBS(pH7.4) with 1% BSA, 0.09% (W/V) sodium azide and 50% Glyce
<b>Storage</b>	Store at -20 °C for one year. Avoid repeated freeze/thaw cycles. When reconstituted in sterile pH 7.4 0.01M PBS or diluent of antibody the antibody is stable for at least two weeks at 2-4 °C.

## Protein Information

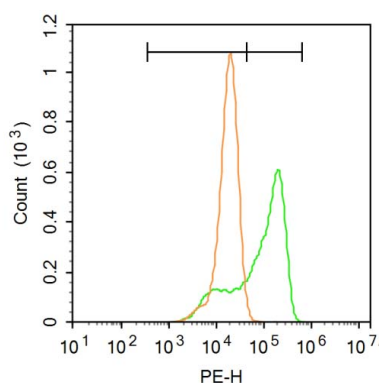
## Background

This product as supplied is intended for research use only, not for use in human, therapeutic or diagnostic applications.

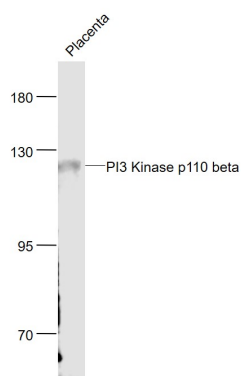
## Images



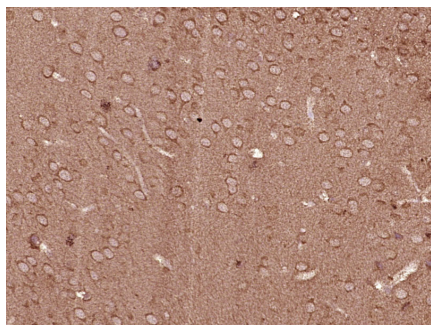
Sample: Jurkat(Human) Cell Lysate at 30 ug 293T(Human) Cell Lysate at 30 ug A431(Human) Cell Lysate at 30 ug HepG2(Human) Cell Lysate at 30 ug Primary: Anti- PI3 Kinase p110 beta (AP94117) at 1/300 dilution Secondary: IRDye800CW Goat Anti-Rabbit IgG at 1/20000 dilution Predicted band size: 123 kD Observed band size: 123 kD



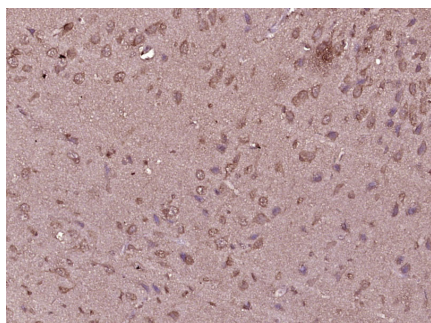
Blank control:A549. Primary Antibody (green line): Rabbit Anti-PI3 Kinase p110 beta antibody (AP94117) Dilution: 1 µg /10<sup>6</sup> cells; Isotype Control Antibody (orange line): Rabbit IgG . Secondary Antibody : Goat anti-rabbit IgG-PE Dilution: 3 µg /test. Protocol The cells were fixed with 4% PFA (10min at room temperature)and then permeabilized with 90% ice-cold methanol for 20 min at -20°C. The cells were then incubated in 5% BSA to block non-specific protein-protein interactions for 30 min at at room temperature .Cells stained with Primary Antibody for 30 min at room temperature. The secondary antibody used for 40 min at room temperature. Acquisition of 20,000 events was performed.



Sample: Placenta (Mouse) Lysate at 40 ug Primary: Anti-PI3 Kinase p110 beta (AP94117) at 1/1000 dilution Secondary: IRDye800CW Goat Anti-Rabbit IgG at 1/20000 dilution Predicted band size: 123 kD Observed band size: 123 kD



Paraformaldehyde-fixed, paraffin embedded (Mouse brain); Antigen retrieval by boiling in sodium citrate buffer (pH6.0) for 15min; Block endogenous peroxidase by 3% hydrogen peroxide for 20 minutes; Blocking buffer (normal goat serum) at 37°C for 30min; Antibody incubation with (PI3 Kinase p110 beta) Polyclonal Antibody, Unconjugated (AP94117) at 1:400 overnight at 4°C, followed by operating according to SP Kit(Rabbit) (sp-0023) instructions and DAB staining.



Paraformaldehyde-fixed, paraffin embedded (Rat brain); Antigen retrieval by boiling in sodium citrate buffer (pH6.0) for 15min; Block endogenous peroxidase by 3% hydrogen peroxide for 20 minutes; Blocking buffer (normal goat serum) at 37°C for 30min; Antibody incubation with (PI3 Kinase p110 beta) Polyclonal Antibody, Unconjugated (AP94117) at 1:400 overnight at 4°C, followed by operating according to SP Kit(Rabbit) (sp-0023) instructions and DAB staining.

Please note: All products are 'FOR RESEARCH USE ONLY. NOT FOR USE IN DIAGNOSTIC OR THERAPEUTIC PROCEDURES'.