

IL-20R alpha Rabbit pAb

IL-20R alpha Rabbit pAb

Catalog # AP94112

Product Information

Application	WB, E
Primary Accession	Q6PHB0
Reactivity	Mouse
Host	Rabbit
Clonality	Polyclonal
Calculated MW	61978
Physical State	Liquid
Immunogen	Recombinant mouse IL-20R alpha protein
Epitope Specificity	30-250/546
Isotype	IgG
Purity	affinity purified by Protein A
Buffer	0.01M TBS (pH7.4) with 1% BSA, 0.02% Proclin300 and 50% Glycerol.
SUBCELLULAR LOCATION	Membrane; Single-pass type I membrane protein.
SIMILARITY	Belongs to the type II cytokine receptor family. Contains 2 fibronectin type-III domains.
SUBUNIT	Heterodimer with IL20RB and heterodimer with IL10RB.
Important Note	This product as supplied is intended for research use only, not for use in human, therapeutic or diagnostic applications.
Background Descriptions	The protein encoded by this gene is a receptor for interleukin 20 (IL20), a cytokine that may be involved in epidermal function. The receptor of IL20 is a heterodimeric receptor complex consisting of this protein and interleukin 20 receptor beta (IL20B). This gene and IL20B are highly expressed in skin. The expression of both genes is found to be upregulated in Psoriasis. [provided by RefSeq]

Additional Information

Gene ID	237313
Other Names	Interleukin-20 receptor subunit alpha, IL-20 receptor subunit alpha, IL-20R-alpha, IL-20RA, IL-20R1, IL20ra
Target/Specificity	Widely expressed with highest levels in skin and testis and high levels in brain. Highly expressed in psoriatic skin.
Dilution	WB=1:500-2000, ELISA=1:5000-10000
Format	0.01M TBS(pH7.4) with 1% BSA, 0.09% (W/V) sodium azide and 50% Glyce
Storage	Store at -20 °C for one year. Avoid repeated freeze/thaw cycles. When reconstituted in sterile pH 7.4 0.01M PBS or diluent of antibody the antibody

is stable for at least two weeks at 2-4 °C.

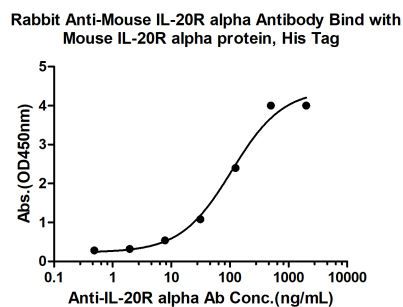
Protein Information

Name	IL20ra
Function	The IL20RA/IL20RB dimer is a receptor for IL19, IL20 and IL24. The IL20RA/IL10RB dimer is a receptor for IL26 (By similarity).
Cellular Location	Membrane; Single-pass type I membrane protein

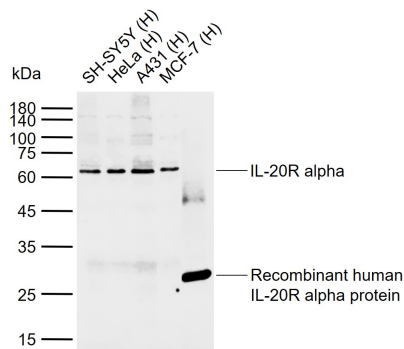
Background

This product as supplied is intended for research use only, not for use in human, therapeutic or diagnostic applications.

Images



Measured by its binding ability in a indirect ELISA. Immobilized Mouse IL-20R alpha protein, His Tag (Cat. bs-41355P) at 2 µg/mL (100 µL/well) can bind Rabbit Anti-Mouse IL-20R alpha Antibody, the EC₅₀ is 107.4 ng/mL.



Sample: Lane 1: Human SH-SY5Y tissue lysates Lane 2: Human HeLa tissue lysates Lane 3: Human A431 tissue lysates Lane 4: Human MCF-7 tissue lysates Lane 5: Recombinant human IL-20R alpha protein Primary: Anti-IL-20R alpha (AP94112) at 1/1000 dilution Secondary: IRDye800CW Goat Anti-Rabbit IgG at 1/20000 dilution Predicted band size: 59 kDa Observed band size: 62,27.6 kDa

Please note: All products are 'FOR RESEARCH USE ONLY. NOT FOR USE IN DIAGNOSTIC OR THERAPEUTIC PROCEDURES'.