

CXCL9 Rabbit pAb

CXCL9 Rabbit pAb
Catalog # AP94109

Product Information

Application	WB, E
Reactivity	Mouse
Host	Rabbit
Clonality	Polyclonal

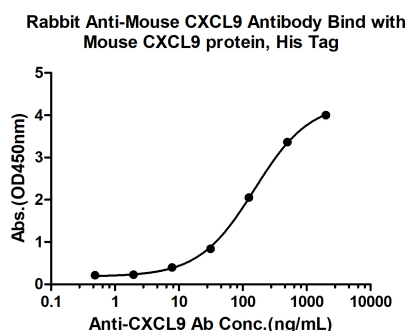
Additional Information

Dilution	WB=1:500-2000,ELISA=1:5000-10000
Format	0.01M TBS(pH7.4) with 1% BSA, 0.09% (W/V) sodium azide and 50% Glyce
Storage	Store at -20 °C for one year. Avoid repeated freeze/thaw cycles. When reconstituted in sterile pH 7.4 0.01M PBS or diluent of antibody the antibody is stable for at least two weeks at 2-4 °C.

Background

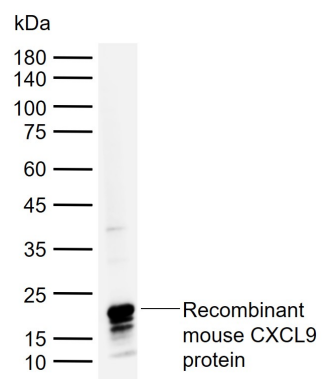
This product as supplied is intended for research use only, not for use in human, therapeutic or diagnostic applications.

Images



Measured by its binding ability in a indirect ELISA. Immobilized Mouse CXCL9 protein, His Tag (Cat. bs-41352P) at 2 µg/mL (100 µL/well) can bind Rabbit Anti- Mouse CXCL9 Antibody, the EC50 is 152.6 ng/mL.

Sample: Lane 1: Recombinant mouse CXCL9 protein
Primary: Anti-CXCL9 (AP94109) at 1/1000 dilution
Secondary: IRDye800CW Goat Anti-Rabbit IgG at 1/20000 dilution Predicted band size: 14 kDa Observed band size: 20 kDa



Please note: All products are 'FOR RESEARCH USE ONLY. NOT FOR USE IN DIAGNOSTIC OR THERAPEUTIC PROCEDURES'.