

## mouse Ly-6G/Ly-6C Rat mAb

mouse Ly-6G/Ly-6C Rat mAb

Catalog # AP94106

### Product Information

---

<b>Application</b>	IHC-P, IHC-F, IF, FC
<b>Primary Accession</b>	<a href="#">P35461</a>
<b>Reactivity</b>	Mouse
<b>Host</b>	Rabbit
<b>Clonality</b>	Monoclonal
<b>Calculated MW</b>	14324
<b>Physical State</b>	Liquid
<b>Immunogen</b>	Recombinant Mouse Ly-6G/Gr-1
<b>Isotype</b>	Rat IgG2b, $\kappa$
<b>Purity</b>	affinity purified by Protein G
<b>Buffer</b>	0.01M PBS.
<b>SUBCELLULAR LOCATION</b>	Cell membrane; Lipid-anchor, GPI-anchor (By similarity).
<b>SIMILARITY</b>	Contains 1 UPAR/Ly6 domain.
<b>Important Note</b>	This product as supplied is intended for research use only, not for use in human, therapeutic or diagnostic applications.
<b>Background Descriptions</b>	Ly6G is a GPI-anchored protein, that is also known as the myeloid differentiation antigen Gr1. The antigen is transiently expressed on monocytes in the bone marrow. The level of antigen expression in the bone marrow directly correlates with granulocyte differentiation and maturation. Ly6G is expressed predominantly on neutrophils, also in a subset of eosinophils, differentiating pre-monocytes, and plasmacytoid dendritic cells.

### Additional Information

---

<b>Gene ID</b>	546644
<b>Other Names</b>	Lymphocyte antigen 6G, Ly-6G, Ly-6G.1, Ly6g
<b>Target/Specificity</b>	Expressed in bone marrow.
<b>Dilution</b>	IHC-P=1:100-500,IHC-F=1:100-500,IF=1:100-500,Flow-Cyt=1:50-100
<b>Format</b>	0.01M TBS(pH7.4) with 1% BSA, 0.09% (W/V) sodium azide and 50% Glyce
<b>Storage</b>	Store at -20 °C for one year. Avoid repeated freeze/thaw cycles. When reconstituted in sterile pH 7.4 0.01M PBS or diluent of antibody the antibody is stable for at least two weeks at 2-4 °C.

### Protein Information

---

<b>Name</b>	Ly6g
<b>Cellular Location</b>	Cell membrane; Lipid-anchor, GPI- anchor
<b>Tissue Location</b>	Expressed in bone marrow.

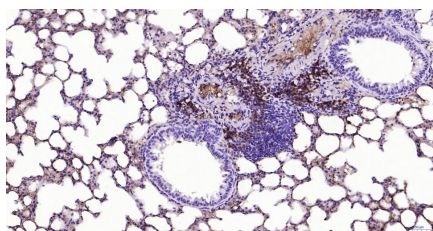
## Background

---

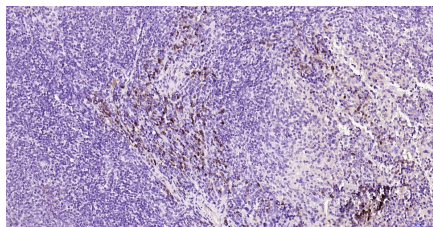
This product as supplied is intended for research use only, not for use in human, therapeutic or diagnostic applications.

## Images

---



Paraformaldehyde-fixed, paraffin embedded Mouse lung; Antigen retrieval by boiling in sodium citrate buffer (pH6.0) for 15 min; Antibody incubation with Ly-6G Monoclonal Antibody, Unconjugated(AP94106) at 1:200 overnight at 4°C, followed by conjugation to the bs-0293G-HRP and DAB (C-0010) staining.



Paraformaldehyde-fixed, paraffin embedded Mouse spleen; Antigen retrieval by boiling in sodium citrate buffer (pH6.0) for 15 min; Antibody incubation with Ly-6G Monoclonal Antibody, Unconjugated(AP94106) at 1:200 overnight at 4°C, followed by conjugation to the bs-0293G-HRP and DAB (C-0010) staining.

Please note: All products are 'FOR RESEARCH USE ONLY. NOT FOR USE IN DIAGNOSTIC OR THERAPEUTIC PROCEDURES'.