

# Tumor Immunity Characterization Antibody Assembly kit

Tumor Immunity Characterization Antibody Assembly kit

Catalog # AP94101

## Product Information

<b>Application</b>	WB
<b>Host</b>	Rabbit
<b>Clonality</b>	Polyclonal

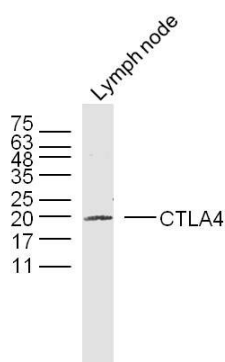
## Additional Information

<b>Dilution</b>	WB=1:500-2000
<b>Format</b>	0.01M TBS(pH7.4) with 1% BSA, 0.09% (W/V) sodium azide and 50% Glycerol
<b>Storage</b>	Store at -20 °C for one year. Avoid repeated freeze/thaw cycles. When reconstituted in sterile pH 7.4 0.01M PBS or diluent of antibody the antibody is stable for at least two weeks at 2-4 °C.

## Background

This product as supplied is intended for research use only, not for use in human, therapeutic or diagnostic applications.

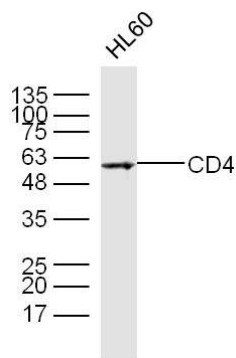
## Images



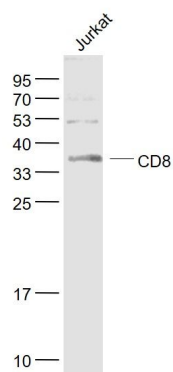
Primary: Anti-CTLA4(bs-10006R) Sample: Lymph node (Mouse) Lysate at 40 ug Primary: Anti-CTLA4 (bs-10006R) at 1/300 dilution Secondary: IRDye800CW Goat Anti-Rabbit IgG at 1/20000 dilution Predicted band size: 21 kD Observed band size: 21 kD

Primary: Anti- CD4(bs-0647R) Sample: HL60 Cell Lysate at 40 ug Primary: Anti- CD4(bs-0647R) at 1/300 dilution Secondary: IRDye800CW Goat Anti-Rabbit IgG at 1/20000 dilution Predicted band size: 48 kD Observed band size: 55kD

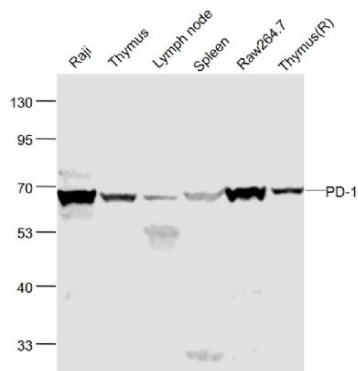




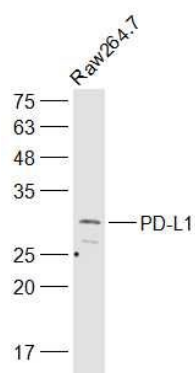
Primary: Anti-CD8(bs-0648R) Sample: Jurkat(Human) Cell Lysate at 30 ug Primary: Anti- CD8(bs-0648R)at 1/1000 dilution Secondary: IRDye800CW Goat Anti-Rabbit IgG at 1/20000 dilution Predicted band size: 27 kD Observed band size: 36 kD



Primary: Anti-PD-1 (bs-1867R) Sample: Raji(Human) Cell Lysate at 30 ug Thymus(Mouse) Lysate at 40 ug Lymph node(Mouse) Lysate at 40 ug Spleen(Mouse) Lysate at 40 ug Raw264.7(Mouse) Cell Lysate at 40 ug Thymus (Rat) Lysate at 40 ug Primary: Anti-PD-1 (bs-1867R) at 1/1000 dilution Secondary: IRDye800CW Goat Anti-Rabbit IgG at 1/20000 dilution Predicted band size: 55 kD Observed band size: 58 kD



Primary: Anti-PD-L1 (bs-4941R) Sample: Raw264.7(Mouse) Cell Lysate at 30 ug Primary: Anti-PD-L1(bs-4941R)at 1/500 dilution Secondary: IRDye800CW Goat Anti-Rabbit IgG at 1/20000 dilution Predicted band size: 32 kD Observed band size: 32 kD



Please note: All products are 'FOR RESEARCH USE ONLY. NOT FOR USE IN DIAGNOSTIC OR THERAPEUTIC PROCEDURES'.