

HPV16 E7 Rabbit pAb

HPV16 E7 Rabbit pAb

Catalog # AP94081

Product Information

Application	WB
Host	Rabbit
Clonality	Polyclonal
Calculated MW	11 KDa
Physical State	Liquid
Immunogen	KLH conjugated synthetic peptide derived from HPV16 E7 protein
Epitope Specificity	11-70/98
Isotype	IgG
Purity	affinity purified by Protein A
Buffer	0.01M TBS (pH7.4) with 1% BSA, 0.02% Proclin300 and 50% Glycerol.
Important Note	This product as supplied is intended for research use only, not for use in human, therapeutic or diagnostic applications.

Additional Information

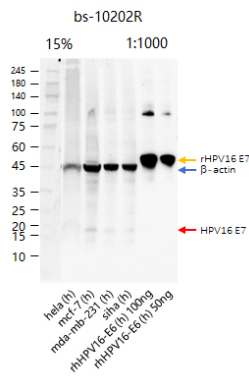
Dilution	WB=1:500-2000,Flow-Cyt=1ug/Test
Format	0.01M TBS(pH7.4) with 1% BSA, 0.09% (W/V) sodium azide and 50% Glyce
Storage	Store at -20 °C for one year. Avoid repeated freeze/thaw cycles. When reconstituted in sterile pH 7.4 0.01M PBS or diluent of antibody the antibody is stable for at least two weeks at 2-4 °C.

Background

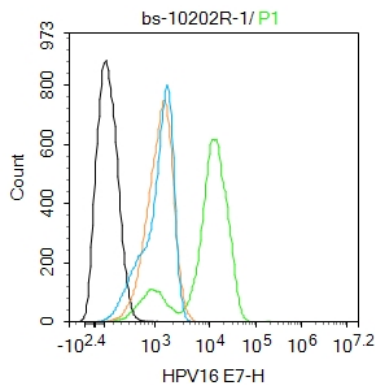
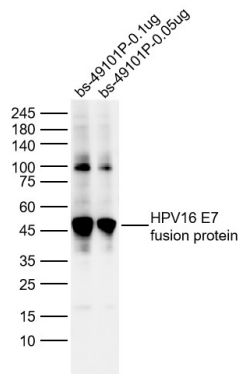
This product as supplied is intended for research use only, not for use in human, therapeutic or diagnostic applications.

Images

Sample: hela (Human) Cell Lysate at 30 ug mcf-7 (Human) Cell Lysate at 30 ug mda-mb-231 (Human) Cell Lysate at 30 ug siha (Human) Cell Lysate at 30 ug recombinant HPV16-E7 protein (bs-49101P) 100 ng recombinant HPV16-E7 protein (bs-49101P) 50 ng Primary: Anti-HPV16 E7 (AP94081) at 1/1000 dilution Secondary: IRDye800CW Goat Anti-Rabbit IgG at 1/20000 dilution Predicted band size: 11 kD Observed band size: 17-20 kD bs-49101P band size: 45 kD



Sample: Lane 1: HPV16 E7 fusion protein (bs-49101P) 0.1ug Lysates Lane 2: HPV16 E7 fusion protein (bs-49101P) 0.05ug Lysates Primary: Anti-HPV16 E7 (AP94081) at 1/1000 dilution Secondary: IRDye800CW Goat Anti-Rabbit IgG at 1/20000 dilution Predicted band size: 11kDa Observed band size: 50kDa



Blank control(black line):Hela. Primary Antibody (green line): Rabbit Anti-HPV16 E7 antibody (AP94081) Dilution:1ug/Test; Secondary Antibody(white blue line): Goat anti-rabbit IgG-AF488 Dilution: 0.5ug/Test. Isotype control(orange line): Normal Rabbit IgG Protocol The cells were fixed with 4% PFA (10min at room temperature)and then permeabilized with 90% ice-cold methanol for 20 min at -20°C, The cells were then incubated in 5%BSA to block non-specific protein-protein interactions for 30 min at room temperature .Cells stained with Primary Antibody for 30 min at room temperature. The secondary antibody used for 40 min at room temperature. Acquisition of 20,000 events was performed.

Please note: All products are 'FOR RESEARCH USE ONLY. NOT FOR USE IN DIAGNOSTIC OR THERAPEUTIC PROCEDURES'.