

PCDHB12 Rabbit pAb

PCDHB12 Rabbit pAb

Catalog # AP94079

Product Information

Application	WB
Primary Accession	Q9Y5F1.1
Reactivity	Human
Host	Rabbit
Clonality	Polyclonal
Calculated MW	84 KDa
Physical State	Liquid
Immunogen	KLH conjugated synthetic peptide derived from human PCDHB12
Epitope Specificity	121-220/795
Isotype	IgG
Purity	affinity purified by Protein A
Buffer	0.01M TBS (pH7.4) with 1% BSA, 0.02% Proclin300 and 50% Glycerol.
SUBCELLULAR LOCATION	Cell membrane; Single-pass type I membrane protein.
SIMILARITY	Contains 6 cadherin domains.
Important Note	This product as supplied is intended for research use only, not for use in human, therapeutic or diagnostic applications.
Background Descriptions	Protocadherins are a large family of cadherin-like cell adhesion proteins that are involved in the establishment and maintenance of neuronal connections in the brain. There are three protocadherin gene clusters, designated alpha, beta and gamma, all of which contain multiple tandemly arranged genes. PCDHB12 (Protocadherin beta 12) is a 795 amino acid protein that is one of 16 proteins in the protocadherin beta cluster. Unlike the alpha and gamma gene clusters whose genes are spliced to downstream constant region exons during transcription, members of the beta cluster (such as PCDHB12) do not use constant-region exons to produce mRNAs. As a result, each protocadherin beta gene encodes the transmembrane, extracellular and short cytoplasmic domains of the protein. Localized to the cell membrane, PCDHB12 is a single-pass type I membrane protein that contains six cadherin domains. PCDHB12 may participate in the establishment and maintenance of specific neuronal connections in the brain.

Additional Information

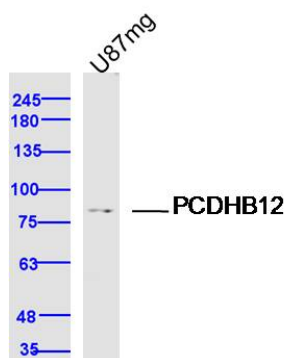
Dilution	WB=1:500-2000
Format	0.01M TBS(pH7.4) with 1% BSA, 0.09% (W/V) sodium azide and 50% Glyce
Storage	Store at -20 °C for one year. Avoid repeated freeze/thaw cycles. When reconstituted in sterile pH 7.4 0.01M PBS or diluent of antibody the antibody is stable for at least two weeks at 2-4 °C.

Protein Information

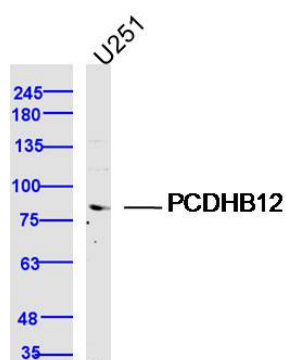
Background

This product as supplied is intended for research use only, not for use in human, therapeutic or diagnostic applications.

Images



Sample: U87MG Cell (Human) Lysate at 40 ug Primary: Anti- PCDHB12 (AP94079) at 1/300 dilution Secondary: IRDye800CW Goat Anti-Rabbit IgG at 1/20000 dilution
Predicted band size: 84 kD Observed band size: 84 kD



Sample: U251 Cell (Human) Lysate at 40 ug Primary: Anti- PCDHB12 (AP94079) at 1/300 dilution Secondary: IRDye800CW Goat Anti-Rabbit IgG at 1/20000 dilution
Predicted band size: 84 kD Observed band size: 84 kD

Please note: All products are 'FOR RESEARCH USE ONLY. NOT FOR USE IN DIAGNOSTIC OR THERAPEUTIC PROCEDURES'.