

GABRB2 Rabbit pAb

GABRB2 Rabbit pAb

Catalog # AP94072

Product Information

Application	WB, IHC-P, IHC-F, IF
Reactivity	Human
Host	Rabbit
Clonality	Polyclonal
Calculated MW	56 KDa
Physical State	Liquid
Immunogen	KLH conjugated synthetic peptide derived from human GABRB2/GABA A Receptor beta 2
Epitope Specificity	251-350/512
Isotype	IgG
Purity	affinity purified by Protein A
Buffer	0.01M TBS (pH7.4) with 1% BSA, 0.02% Proclin300 and 50% Glycerol.
SUBCELLULAR LOCATION	Cell junction, synapse, postsynaptic cell membrane; Multi-pass membrane protein. Cell membrane; Multi-pass membrane protein.
SIMILARITY	Belongs to the ligand-gated ion channel (TC 1.A.9) family. Gamma-aminobutyric acid receptor (TC 1.A.9.5) subfamily. GABRB2 sub-subfamily.
SUBUNIT	Generally pentameric. There are five types of GABA(A) receptor chains: alpha, beta, gamma, delta, and rho. Binds UBQLN1. Interacts with KCTD8, KCTD12 and KCTD16; this interaction determines the pharmacology and kinetics of the receptor response, the KCTD proteins markedly accelerating the GABA-B response, although to different extents (By similarity).
Important Note	This product as supplied is intended for research use only, not for use in human, therapeutic or diagnostic applications.
Background Descriptions	Gamma-aminobutyric acid type A (GABAA) receptors are members of the neurotransmitter ligand-gated ion channels that mediate neuronal inhibition on binding GABA. The effects of GABA on GABAA receptors are modulated by a range of therapeutically important drugs, including barbiturates, anaesthetics and benzodiazepines.

Additional Information

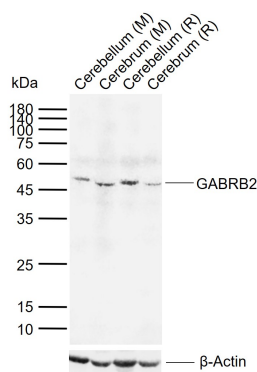
Target/Specificity	Isoform 1 and isoform 2 show reduced expression in schizophrenic brain. Isoform 3 shows increased expression in schizophrenic and bipolar disorder brains while isoform 4 shows reduced expression.
Dilution	WB=1:500-2000,IHC-P=1:100-500,IHC-F=1:100-500,IF=1:100-500
Format	0.01M TBS(pH7.4) with 1% BSA, 0.09% (W/V) sodium azide and 50% Glyce
Storage	Store at -20 °C for one year. Avoid repeated freeze/thaw cycles. When

reconstituted in sterile pH 7.4 0.01M PBS or diluent of antibody the antibody is stable for at least two weeks at 2-4 °C.

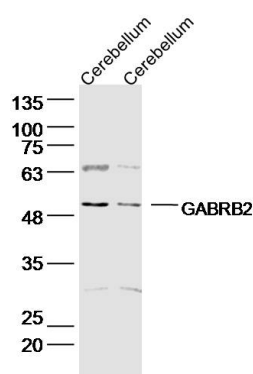
Background

This product as supplied is intended for research use only, not for use in human, therapeutic or diagnostic applications.

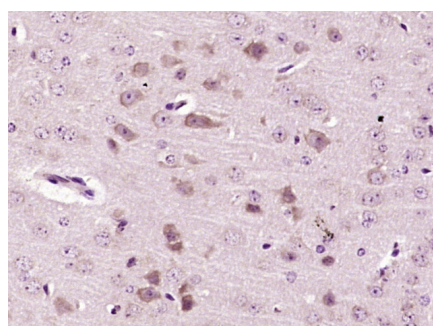
Images



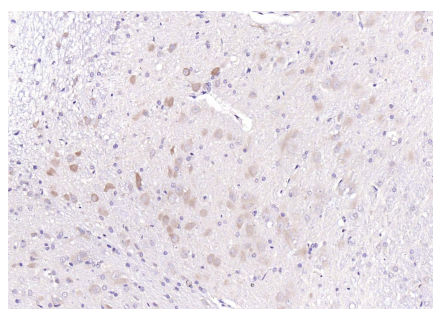
Sample: Lane 1: Mouse Cerebellum tissue lysates Lane 2: Mouse Cerebrum tissue lysates Lane 3: Rat Cerebellum tissue lysates Lane 4: Rat Cerebrum tissue lysates
Primary: Anti-GABRB2 (AP94072) at 1/1000 dilution
Secondary: IRDye800CW Goat Anti-Rabbit IgG at 1/20000 dilution
Predicted band size: 56 kDa Observed band size: 50 kDa



Sample: Cerebellum (rat) Lysate at 40 ug Cerebellum (mouse) Lysate at 40 ug
Primary: Anti- GABRB2 (AP94072) at 1/300 dilution
Secondary: IRDye800CW Goat Anti-Rabbit IgG at 1/20000 dilution
Predicted band size: 56kD Observed band size: 56 kD



Paraformaldehyde-fixed, paraffin embedded (Mouse brain); Antigen retrieval by boiling in sodium citrate buffer (pH6.0) for 15min; Block endogenous peroxidase by 3% hydrogen peroxide for 20 minutes; Blocking buffer (normal goat serum) at 37°C for 30min; Antibody incubation with (GABRB2) Polyclonal Antibody, Unconjugated (AP94072) at 1:400 overnight at 4°C, followed by operating according to SP Kit(Rabbit) (sp-0023) instructions and DAB staining.



Paraformaldehyde-fixed, paraffin embedded (rat brain); Antigen retrieval by boiling in sodium citrate buffer (pH6.0) for 15min; Block endogenous peroxidase by 3% hydrogen peroxide for 20 minutes; Blocking buffer (normal goat serum) at 37°C for 30min; Antibody incubation with (GABRB2) Polyclonal Antibody, Unconjugated (AP94072) at 1:200 overnight at 4°C, followed by operating according to SP Kit(Rabbit) (sp-0023) instructions and DAB staining.

Please note: All products are 'FOR RESEARCH USE ONLY. NOT FOR USE IN DIAGNOSTIC OR THERAPEUTIC PROCEDURES'.