

EBFP Mouse mAb

EBFP Mouse mAb
Catalog # AP94069

Product Information

Application	WB
Host	Rabbit
Clonality	Monoclonal
Physical State	Liquid
Immunogen	Recombinant EBFP protein
Isotype	IgG
Purity	affinity purified by Protein G
Buffer	0.01M TBS (pH7.4) with 1% BSA, 0.02% Proclin300 and 50% Glycerol.
Important Note	This product as supplied is intended for research use only, not for use in human, therapeutic or diagnostic applications.
Background Descriptions	Enhanced Blue Fluorescent Protein (EBFP) emits a strong blue fluorescence. EBFP can be used as protein "tags" to study the sub-cellular localization of proteins and/or their translocation upon stimulation or as markers for transfection in transient and stable expression systems.

Additional Information

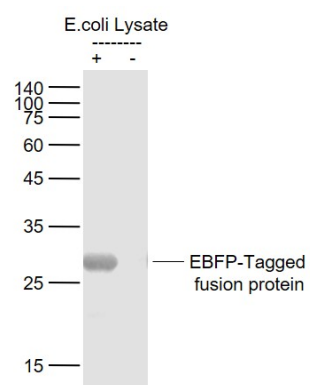
Dilution	WB=1:1000-5000
Format	0.01M TBS(pH7.4) with 1% BSA, 0.09% (W/V) sodium azide and 50% Glyce
Storage	Store at -20 °C for one year. Avoid repeated freeze/thaw cycles. When reconstituted in sterile pH 7.4 0.01M PBS or diluent of antibody the antibody is stable for at least two weeks at 2-4 °C.

Background

This product as supplied is intended for research use only, not for use in human, therapeutic or diagnostic applications.

Images

Sample: Lane 1: EBFP-Tagged fusion protein (full length)
Overexpression E.coli Lysate (Cat#: bs-33185P) at 4 ug
Lane 2: Control (-) E.coli Lysate at 4 ug
Primary: Anti-EBFP-Tag (AP94069) at 1/1000 dilution
Secondary: IRDye800CW Goat Anti-Mouse IgG at 1/20000 dilution
Predicted band size: 26 kD Observed band size: 26 kD



Please note: All products are 'FOR RESEARCH USE ONLY. NOT FOR USE IN DIAGNOSTIC OR THERAPEUTIC PROCEDURES'.