

mCherry Rabbit pAb

mCherry Rabbit pAb

Catalog # AP94067

Product Information

Application	WB
Host	Rabbit
Clonality	Polyclonal
Physical State	Liquid
Immunogen	Recombinant mCherry protein
Isotype	IgG
Purity	affinity purified by Protein A

Buffer 0.01M TBS (pH7.4) with 1% BSA, 0.02% Proclin300 and 50% Glycerol.

Important Note This product as supplied is intended for research use only, not for use in human, therapeutic or diagnostic applications.

Background Descriptions mCherry is a fluorophore (a fluorescent molecule) used in biotechnology as a tracer to follow the flow of fluids, as a marker when tagged to molecules and cells components. mCherry is a monomeric fluorescent construct with peak absorption/emission at 587 nm and 610 nm, respectively. It is resistant to photobleaching and is stable. mCherry is sometimes preferred to other fluorophores due to its colour, as well as its photostability compared to other monomeric fluorophores.

Additional Information

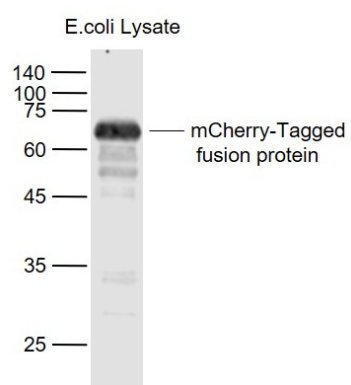
Dilution	WB=1:1000-5000
Format	0.01M TBS(pH7.4) with 1% BSA, 0.09% (W/V) sodium azide and 50% Glyce
Storage	Store at -20 °C for one year. Avoid repeated freeze/thaw cycles. When reconstituted in sterile pH 7.4 0.01M PBS or diluent of antibody the antibody is stable for at least two weeks at 2-4 °C.

Background

This product as supplied is intended for research use only, not for use in human, therapeutic or diagnostic applications.

Images

Sample: Lane 1: mCherry-tagged fusion protein
Overexpression E.coli Lysate (Cat#: bs-33131P) at 4 ug
Primary: Anti- mCherry-Tag (AP94067) at 1/1000 dilution
Secondary: IRDye800CW Goat Anti-Rabbit IgG at 1/20000



dilution Predicted band size: 70 kD Observed band size:
70 kD

Please note: All products are 'FOR RESEARCH USE ONLY. NOT FOR USE IN DIAGNOSTIC OR THERAPEUTIC PROCEDURES'.