

# CCL27 Rabbit pAb

CCL27 Rabbit pAb  
Catalog # AP94065

## Product Information

---

<b>Application</b>	IHC-P, IHC-F, IF
<b>Primary Accession</b>	<a href="#">Q9Z1X0</a>
<b>Reactivity</b>	Mouse
<b>Host</b>	Rabbit
<b>Clonality</b>	Polyclonal
<b>Calculated MW</b>	13464
<b>Physical State</b>	Liquid
<b>Immunogen</b>	KLH conjugated synthetic peptide derived from mouse CCL27
<b>Epitope Specificity</b>	25-112/164
<b>Isotype</b>	IgG
<b>Purity</b>	affinity purified by Protein A
<b>Buffer</b>	0.01M TBS (pH7.4) with 1% BSA, 0.02% Proclin300 and 50% Glycerol.
<b>SUBCELLULAR LOCATION</b>	Secreted.
<b>SIMILARITY</b>	Belongs to the intercrine beta (chemokine CC) family.
<b>SUBUNIT</b>	Monomer, dimer, and tetramer. Heparin avidly promotes oligomerization.
<b>Important Note</b>	This product as supplied is intended for research use only, not for use in human, therapeutic or diagnostic applications.
<b>Background Descriptions</b>	This gene is one of several CC cytokine genes clustered on the p-arm of chromosome 9. Cytokines are a family of secreted proteins involved in immunoregulatory and inflammatory processes. The CC cytokines are proteins characterized by two adjacent cysteines. The protein encoded by this gene is chemotactic for skin-associated memory T lymphocytes. This cytokine may also play a role in mediating homing of lymphocytes to cutaneous sites. It specifically binds to chemokine receptor 10 (CCR10). Studies of a similar murine protein indicate that these protein-receptor interactions have a pivotal role in T cell-mediated skin inflammation. [provided by RefSeq].

## Additional Information

---

<b>Gene ID</b>	20301
<b>Other Names</b>	C-C motif chemokine 27, CC chemokine ILC, Cutaneous T-cell-attracting chemokine, CTACK, ESkin, IL-11 R-alpha-locus chemokine, ALP, mILC, Skinkine, Small-inducible cytokine A27, Ccl27, Ilc, Scya27
<b>Target/Specificity</b>	Testis, thymus, placenta, ovary and skin.
<b>Dilution</b>	IHC-P=1:100-500,IHC-F=1:100-500,IF=1:100-500
<b>Format</b>	0.01M TBS(pH7.4) with 1% BSA, 0.09% (W/V) sodium azide and 50% Glyce

<b>Storage</b>	Store at -20 °C for one year. Avoid repeated freeze/thaw cycles. When reconstituted in sterile pH 7.4 0.01M PBS or diluent of antibody the antibody is stable for at least two weeks at 2-4 °C.
----------------	---

## Protein Information

---

<b>Name</b>	Ccl27
<b>Synonyms</b>	Ilc, Scya27
<b>Function</b>	Chemotactic factor that attracts skin-associated memory T- lymphocytes. May play a role in mediating homing of lymphocytes to cutaneous sites. May play a role in cell migration during embryogenesis. Nuclear forms may facilitate cellular migration by inducing cytoskeletal relaxation. Binds to CCR10.
<b>Cellular Location</b>	[Isoform 1]: Secreted. Nucleus Note=May also be nuclear when following receptor (CCR10)-mediated internalization.
<b>Tissue Location</b>	Isoform 1 is predominantly expressed in placenta and weakly in skin. Isoform 2 is predominantly expressed in testes and brain, weakly in kidney and liver and even lower in heart and muscle Low expression of both isoforms in other tissues

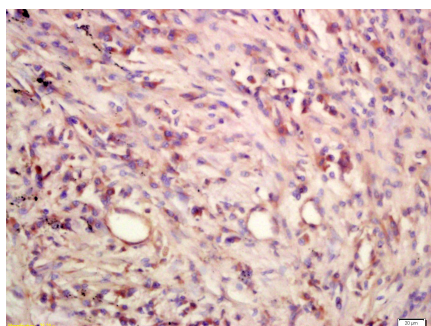
## Background

---

This product as supplied is intended for research use only, not for use in human, therapeutic or diagnostic applications.

## Images

---



Tissue/cell: human lung carcinoma; 4% Paraformaldehyde-fixed and paraffin-embedded; Antigen retrieval: citrate buffer ( 0.01M, pH 6.0 ), Boiling bathing for 15min; Block endogenous peroxidase by 3% Hydrogen peroxide for 30min; Blocking buffer (normal goat serum,C-0005) at 37°C for 20 min; Incubation: Anti-CCL27 Polyclonal Antibody, Unconjugated(AP94065) 1:200, overnight at 4°C, followed by conjugation to the secondary antibody(SP-0023) and DAB(C-0010) staining

Please note: All products are 'FOR RESEARCH USE ONLY. NOT FOR USE IN DIAGNOSTIC OR THERAPEUTIC PROCEDURES'.