

Neuropilin 1 Rabbit pAb

Neuropilin 1 Rabbit pAb

Catalog # AP94059

Product Information

Application	WB
Primary Accession	Q5T7F3
Reactivity	Human
Host	Rabbit
Clonality	Polyclonal
Calculated MW	100 KDa
Physical State	Liquid
Immunogen	KLH conjugated synthetic peptide derived from human Neuropilin 1
Epitope Specificity	751-850/923
Isotype	IgG
Purity	affinity purified by Protein A
Buffer	0.01M TBS (pH7.4) with 1% BSA, 0.02% Proclin300 and 50% Glycerol.
SUBCELLULAR LOCATION	Cell membrane; Single-pass type I membrane protein. Isoform 2: Secreted.
SIMILARITY	Belongs to the neuropilin family. Contains 2 CUB domains. Contains 2 F5/8 type C domains. Contains 1 MAM domain.
SUBUNIT	Homodimer, and heterodimer with NRP2. Interacts with FER. Binds PLXNB1.
Important Note	This product as supplied is intended for research use only, not for use in human, therapeutic or diagnostic applications.
Background Descriptions	This gene encodes one of two neuropilins, which contain specific protein domains which allow them to participate in several different types of signaling pathways that control cell migration. Neuropilins contain a large N-terminal extracellular domain, made up of complement-binding, coagulation factor V/VIII, and meprin domains. These proteins also contains a short membrane-spanning domain and a small cytoplasmic domain. Neuropilins bind many ligands and various types of co-receptors; they affect cell survival, migration, and attraction. Some of the ligands and co-receptors bound by neuropilins are vascular endothelial growth factor (VEGF) and semaphorin family members. Several alternatively spliced transcript variants that encode different protein isoforms have been described for this gene. [provided by RefSeq, Oct 2011]

Additional Information

Target/Specificity	The expression of isoforms 1 and 2 does not seem to overlap. Isoform 1 is expressed by the blood vessels of different tissues. In the developing embryo it is found predominantly in the nervous system. In adult tissues, it is highly expressed in heart and placenta; moderately in lung, liver, skeletal muscle, kidney and pancreas; and low in adult brain. Isoform 2 is found in liver hepatocytes, kidney distal and proximal tubules.
Dilution	WB=1:500-2000

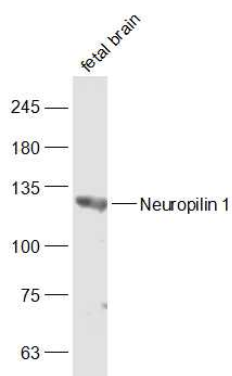
Format	0.01M TBS(pH7.4) with 1% BSA, 0.09% (W/V) sodium azide and 50% Glyce
Storage	Store at -20 °C for one year. Avoid repeated freeze/thaw cycles. When reconstituted in sterile pH 7.4 0.01M PBS or diluent of antibody the antibody is stable for at least two weeks at 2-4 °C.

Protein Information

Background

This product as supplied is intended for research use only, not for use in human, therapeutic or diagnostic applications.

Images



Sample: Fatal brain (Mouse) Lysate at 40 ug Primary:
Anti-Neuropilin 1 (AP94059) at 1/1000 dilution
Secondary: IRDye800CW Goat Anti-Rabbit IgG at 1/20000
dilution Predicted band size: 100 kD Observed band size:
130 kD

Please note: All products are 'FOR RESEARCH USE ONLY. NOT FOR USE IN DIAGNOSTIC OR THERAPEUTIC PROCEDURES'.