

COQ10B Rabbit pAb

COQ10B Rabbit pAb

Catalog # AP94046

Product Information

Application	WB
Primary Accession	Q9H8M1
Reactivity	Human
Host	Rabbit
Clonality	Polyclonal
Calculated MW	27071
Physical State	Liquid
Immunogen	KLH conjugated synthetic peptide derived from human COQ10B
Epitope Specificity	38-110/238
Isotype	IgG
Purity	affinity purified by Protein A
Buffer	0.01M TBS (pH7.4) with 1% BSA, 0.02% Proclin300 and 50% Glycerol.
SUBCELLULAR LOCATION	Mitochondrion inner membrane; Peripheral membrane protein; Matrix side
SIMILARITY	Belongs to the COQ10 family.
SUBUNIT	Interacts with coenzyme Q
Important Note	This product as supplied is intended for research use only, not for use in human, therapeutic or diagnostic applications.
Background Descriptions	COQ10B, Coenzyme Q10, is a 247 amino acid protein encoded by the human gene COQ10B. COQ10B is a mitochondrial protein that belongs to the COQ10 family. COQ10B is an essential biological cofactor which increases brain mitochondrial concentration and exerts neuroprotective effects. Plasma COQ10B levels decrease in patients with advanced chronic heart failure (CHF) while COQ10B levels in hyperthyroid patients are found among the lowest detected in human diseases. Likewise, COQ10B is elevated in hypothyroid subjects, also in subclinical conditions, suggesting the usefulness of this index in assessing metabolic status in thyroid disorders. It is believed that secretion of adrenal hormones is in some way related to COQ10B levels, both in augmented and reduced conditions. However, since thyroid hormones have an important role in modulating COQ10B levels and metabolism, when coexistent, thyroid deficiency seems to play a prevalent role in comparison with adrenal deficiency.

Additional Information

Gene ID	80219
Other Names	Coenzyme Q-binding protein COQ10 homolog B, mitochondrial, COQ10B
Dilution	WB=1:500-2000
Format	0.01M TBS(pH7.4) with 1% BSA, 0.09% (W/V) sodium azide and 50% Glyce

Storage

Store at -20 °C for one year. Avoid repeated freeze/thaw cycles. When reconstituted in sterile pH 7.4 0.01M PBS or diluent of antibody the antibody is stable for at least two weeks at 2-4 °C.

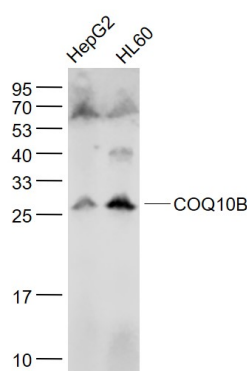
Protein Information

Name	COQ10B
Function	Required for the function of coenzyme Q in the respiratory chain. May serve as a chaperone or may be involved in the transport of Q6 from its site of synthesis to the catalytic sites of the respiratory complexes (By similarity).
Cellular Location	Mitochondrion inner membrane; Peripheral membrane protein; Matrix side

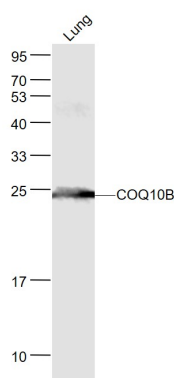
Background

This product as supplied is intended for research use only, not for use in human, therapeutic or diagnostic applications.

Images

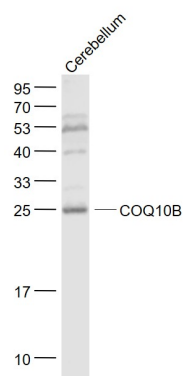


Sample: HepG2(Human) Cell Lysate at 30 ug
HL60(Human) Cell Lysate at 30 ug Primary: Anti- COQ10B (AP94046) at 1/1000 dilution Secondary: IRDye800CW Goat Anti-Rabbit IgG at 1/20000 dilution Predicted band size: 23 kD Observed band size: 26 kD



Sample: Lung (Mouse) Lysate at 40 ug Primary: Anti- COQ10B (AP94046) at 1/1000 dilution Secondary: IRDye800CW Goat Anti-Rabbit IgG at 1/20000 dilution Predicted band size: 23 kD Observed band size: 23 kD

Sample: Cerebellum (Mouse) Lysate at 40 ug Primary: Anti- COQ10B (AP94046) at 1/1000 dilution Secondary: IRDye800CW Goat Anti-Rabbit IgG at 1/20000 dilution Predicted band size: 23 kD Observed band size: 25 kD



Please note: All products are 'FOR RESEARCH USE ONLY. NOT FOR USE IN DIAGNOSTIC OR THERAPEUTIC PROCEDURES'.