

RAB8A Mouse mAb

RAB8A Mouse mAb

Catalog # AP94044

Product Information

Application	WB, E
Host	Rabbit
Clonality	Monoclonal
Calculated MW	23 KDa
Physical State	Liquid
Immunogen	Recombinant RAB8A protein
Isotype	IgG1, k
Purity	affinity purified by Protein G
Buffer	0.01M TBS (pH7.4) with 1% BSA, 0.02% Proclin300 and 50% Glycerol.
SUBCELLULAR LOCATION	Cell membrane; Lipid-anchor; Cytoplasmic side (Potential). Golgi apparatus. Cytoplasm, perinuclear region. Cell projection. Note=Colocalizes with OPTN at the Golgi complex and in vesicular structures close to the plasma membrane. In the GDP-bound form, present in the perinuclear region. Shows a polarized distribution to distal regions of cell protrusions in the GTP-bound form. Colocalizes with PARD3, PRKCI, EXOC5, OCLN, PODXL and RAB11A in apical membrane initiation sites (AMIS) during the generation of apical surface and luminogenesis.
SIMILARITY	Belongs to the small GTPase superfamily. Rab family.
SUBUNIT	Interacts with MAP4K2 and SYTL4. Interacts with SGSM1 and SGSM3 (By similarity). Interacts with OPTN. Interacts with RAB3IP. Interacts with MYO5B. Interacts with PIFO. Interacts with BIRC6/bruce. Interacts with OCRL.
Important Note	This product as supplied is intended for research use only, not for use in human, therapeutic or diagnostic applications.
Background Descriptions	The protein encoded by this gene is a member of the RAS superfamily which are small GTP/GDP-binding proteins with an average size of 200 amino acids. The RAS-related proteins of the RAB/YPT family may play a role in the transport of proteins from the endoplasmic reticulum to the Golgi and the plasma membrane. This protein shares 97%, 96%, and 51% similarity with the dog RAB8, mouse MEL, and mouse YPT1 proteins, respectively and contains the 4 GTP/GDP-binding sites that are present in all the RAS proteins. The putative effector-binding site of this protein is similar to that of the RAB/YPT proteins. However, this protein contains a C-terminal CAAX motif that is characteristic of many RAS superfamily members but which is not found in YPT1 and the majority of RAB proteins. Although this gene was isolated as a transforming gene from a melanoma cell line, no linkage between MEL and malignant melanoma has been demonstrable. This oncogene is located 800 kb distal to MYO9B on chromosome 19p13.1.

Additional Information

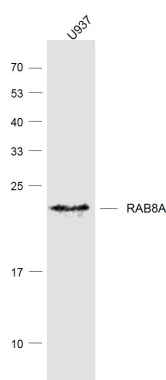
Dilution	WB=1:100-200,ELISA=1:5000-10000
-----------------	---------------------------------

Format	0.01M TBS(pH7.4) with 1% BSA, 0.09% (W/V) sodium azide and 50% Glycerol
Storage	Store at -20 °C for one year. Avoid repeated freeze/thaw cycles. When reconstituted in sterile pH 7.4 0.01M PBS or diluent of antibody the antibody is stable for at least two weeks at 2-4 °C.

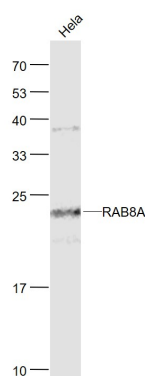
Background

This product as supplied is intended for research use only, not for use in human, therapeutic or diagnostic applications.

Images



Sample: U937(Human) Cell Lysate at 30 ug Primary: Anti-RAB8A (AP94044) at 1/1000 dilution Secondary: IRDye800CW Goat Anti-Mouse IgG at 1/20000 dilution Predicted band size: 23 kD Observed band size: 23 kD



Sample: HeLa(Human) Cell Lysate at 30 ug Primary: Anti-RAB8A (AP94044) at 1/1000 dilution Secondary: IRDye800CW Goat Anti-Mouse IgG at 1/20000 dilution Predicted band size: 23 kD Observed band size: 23 kD

Please note: All products are 'FOR RESEARCH USE ONLY. NOT FOR USE IN DIAGNOSTIC OR THERAPEUTIC PROCEDURES'.