

# AFP(A2) Mouse mAb

AFP(A2) Mouse mAb

Catalog # AP94036

## Product Information

---

|   |  |
|---|--|
| <b>Application</b>                      | WB, IHC-P, IHC-F, IF, E  |
| <b>Host</b>                             | Rabbit   |
| <b>Clonality</b>                        | Monoclonal   |
| <b>Calculated MW</b>                    | 65 KDa   |
| <b>Physical State</b>                   | Liquid   |
| <b>Immunogen</b>                        | AFP protein  |
| <b>Epitope Specificity</b>              | full length  |
| <b>Isotype</b>                          | IgG  |
| <b>Purity</b>                           | affinity purified by Protein G   |
| <b>Buffer</b>                           | 0.01M PBS (pH7.4) with 0.02% Proclin300.   |
| <b>SUBCELLULAR LOCATION</b>             | Secreted.  |
| <b>SIMILARITY</b>                       | Belongs to the ALB/AFP/VDB family. Contains 3 albumin domains.   |
| <b>SUBUNIT</b>                          | Dimeric and trimeric forms have been found in addition to the monomeric form.  |
| <b>Post-translational modifications</b> | Independent studies suggest heterogeneity of the N-terminal sequence of the mature protein and of the cleavage site of the signal sequence. Sulfated.  |
| <b>Important Note</b>                   | This product as supplied is intended for research use only, not for use in human, therapeutic or diagnostic applications.  |
| <b>Background Descriptions</b>          | Alpha 1 Fetoprotein is a major plasma protein produced by the yolk sac and the liver during fetal life. Alpha fetoprotein expression in adults is often associated with hepatoma or teratoma. However, hereditary persistence of alpha-fetoprotein may also be found in individuals with no obvious pathology. The protein is thought to be the fetal counterpart of serum albumin, and the alpha fetoprotein and albumin genes are present in tandem in the same transcriptional orientation on chromosome 4. Alpha fetoprotein is found in monomeric as well as dimeric and trimeric forms, and binds copper, nickel, fatty acids and bilirubin. The level of alpha fetoprotein in amniotic fluid is used to measure renal loss of protein to screen for spina bifida and anencephaly. Expression has been documented in human adrenal, liver, ovary, testis, and pancreas. ESTs have been isolated from normal human brain, liver/spleen, embryo and uterus tissue libraries. |

## Additional Information

---

|                           |   |
|---------------------------|---|
| <b>Target/Specificity</b> | Plasma. Synthesized by the fetal liver and yolk sac.                              |
| <b>Dilution</b>           | WB=1:500-2000, IHC-P=1:100-500, IHC-F=1:100-500, IF=1:100-500, ELISA=1:5000-10000 |
| <b>Format</b>             | 0.01M TBS (pH7.4) with 1% BSA, 0.09% (W/V) sodium azide and 50% Glycine           |

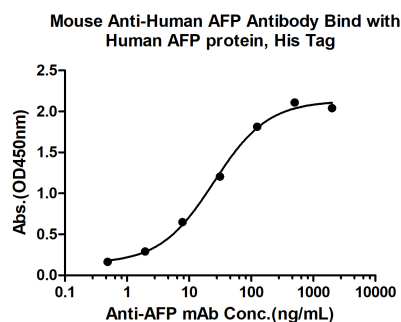
## Storage

Store at -20 °C for one year. Avoid repeated freeze/thaw cycles. When reconstituted in sterile pH 7.4 0.01M PBS or diluent of antibody the antibody is stable for at least two weeks at 2-4 °C.

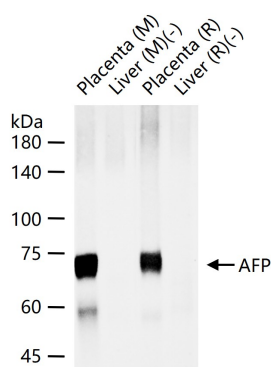
## Background

This product as supplied is intended for research use only, not for use in human, therapeutic or diagnostic applications.

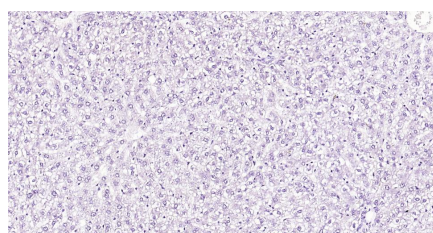
## Images



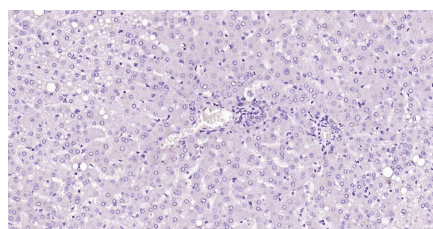
Measured by its binding ability in a indirect ELISA. Immobilized Human AFP protein, His Tag (Cat. bs-43140P) at 2 µg/mL (100 µL/well) can bind Mouse Anti-Human AFP Antibody, the EC<sub>50</sub> is 24.94 ng/mL.



25 ug total protein per lane of various lysates (see on figure) probed with AFP(A2) monoclonal antibody, unconjugated (AP94036) at 1:1000 dilution and 4°C overnight incubation. Followed by conjugated secondary antibody incubation at r.t. for 60 min.

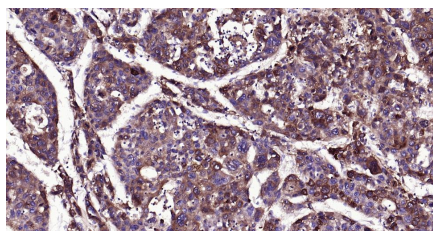


(Negative control)Paraformaldehyde-fixed, paraffin embedded Rat Liver; Antigen retrieval by boiling in sodium citrate buffer (pH6.0) for 15 min; Antibody incubation with AFP(A2) Monoclonal Antibody, Unconjugated(AP94036) at 1:500 overnight at 4°C, followed by conjugation to the bs-40296G-HRP and DAB (C-0010) staining.



(Negative control)Paraformaldehyde-fixed, paraffin embedded Human Liver; Antigen retrieval by boiling in sodium citrate buffer (pH6.0) for 15 min; Antibody incubation with AFP(A2) Monoclonal Antibody, Unconjugated(AP94036) at 1:500 overnight at 4°C, followed by conjugation to the bs-40296G-HRP and DAB (C-0010) staining.

Paraformaldehyde-fixed, paraffin embedded Human Liver Cancer; Antigen retrieval by boiling in sodium citrate buffer (pH6.0) for 15 min; Antibody incubation with AFP(A2) Monoclonal Antibody, Unconjugated(AP94036) at 1:200 overnight at 4°C, followed by conjugation to the



bs-40296G-HRP and DAB (C-0010) staining.

Please note: All products are 'FOR RESEARCH USE ONLY. NOT FOR USE IN DIAGNOSTIC OR THERAPEUTIC PROCEDURES'.