

# LRRC25 Rabbit pAb

LRRC25 Rabbit pAb

Catalog # AP94029

## Product Information

---

<b>Application</b>	WB
<b>Reactivity</b>	Mouse
<b>Host</b>	Rabbit
<b>Clonality</b>	Polyclonal
<b>Calculated MW</b>	31 KDa
<b>Physical State</b>	Liquid
<b>Immunogen</b>	KLH conjugated synthetic peptide derived from mouse LRRC25
<b>Isotype</b>	IgG
<b>Purity</b>	affinity purified by Protein A
<b>Buffer</b>	0.01M TBS (pH7.4) with 1% BSA, 0.02% Proclin300 and 50% Glycerol.
<b>SUBCELLULAR LOCATION</b>	Membrane; Single-pass type I membrane protein.
<b>Important Note</b>	This product as supplied is intended for research use only, not for use in human, therapeutic or diagnostic applications.
<b>Background Descriptions</b>	LRRC25 is a 305 amino acid protein that contains two LRR repeats. LRRC25 is a single-pass type I membrane protein that is expressed in monocyte-derived dendritic cells (MDDC), granulocytes, monocytes, plasmacytoid dendritic cells (PDC), B-lymphocytes, peripheral blood leukocytes, spleen and bone marrow, with lower levels in lymph nodes, fetal liver, and appendix. LRRC25 may play a role in the activation of cells of innate and acquired immunity.

## Additional Information

---

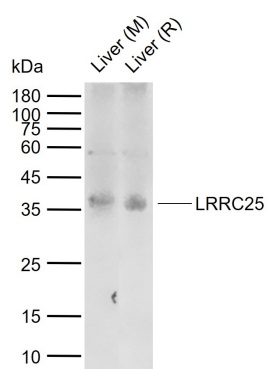
<b>Target/Specificity</b>	Expressed in plasmacytoid dendritic cells (PDC), monocyte-derived dendritic cells (MDDC), granulocytes, monocytes, B-lymphocytes, peripheral blood leukocytes, spleen, bone marrow, and, to a lesser extent, lymph nodes, fetal liver, and appendix but not in thymus.
<b>Dilution</b>	WB=1:500-2000
<b>Format</b>	0.01M TBS(pH7.4) with 1% BSA, 0.09% (W/V) sodium azide and 50% Glyce
<b>Storage</b>	Store at -20 °C for one year. Avoid repeated freeze/thaw cycles. When reconstituted in sterile pH 7.4 0.01M PBS or diluent of antibody the antibody is stable for at least two weeks at 2-4 °C.

## Background

---

This product as supplied is intended for research use only, not for use in human, therapeutic or diagnostic applications.

## Images



Sample: Lane 1: Mouse Liver tissue lysates Lane 2: Rat Liver tissue lysates Primary: Anti-LRRC25 (AP94029) at 1/1000 dilution Secondary: IRDye800CW Goat Anti-Rabbit IgG at 1/20000 dilution Predicted band size: 31 kDa Observed band size: 36 kDa

Please note: All products are 'FOR RESEARCH USE ONLY. NOT FOR USE IN DIAGNOSTIC OR THERAPEUTIC PROCEDURES'.