

TMEM176A Rabbit pAb

TMEM176A Rabbit pAb

Catalog # AP93980

Product Information

Application	WB, IHC-P, IHC-F, IF
Primary Accession	Q9DCS1
Reactivity	Mouse
Host	Rabbit
Clonality	Polyclonal
Calculated MW	26596
Physical State	Liquid
Immunogen	KLH conjugated synthetic peptide derived from MOUSE TMEM176A
Epitope Specificity	1-100/235
Isotype	IgG
Purity	affinity purified by Protein A
Buffer	0.01M TBS (pH7.4) with 1% BSA, 0.02% Proclin300 and 50% Glycerol.
SUBCELLULAR LOCATION	Membrane.
SIMILARITY	Belongs to the TMEM176 family.
Important Note	This product as supplied is intended for research use only, not for use in human, therapeutic or diagnostic applications.
Background Descriptions	TMEM176A is a 235 amino acid multi-pass membrane protein belonging to the TMEM176 family. The gene encoding GS188 maps to human chromosome 7, which houses over 1,000 genes and comprises nearly 5% of the human genome. Chromosome 7 has been linked to Osteogenesis imperfecta, Pendred syndrome, Lissencephaly, Citrullinemia and Shwachman-Diamond syndrome. The deletion of a portion of the q arm of chromosome 7 is associated with Williams-Beuren syndrome, a condition characterized by mild mental retardation, an unusual comfort and friendliness with strangers and an elfin appearance. Deletions of portions of the q arm of chromosome 7 are also seen in a number of myeloid disorders including cases of acute myelogenous leukemia and myelodysplasia.

Additional Information

Gene ID	66058
Other Names	Transmembrane protein 176A, Gene signature 188, Kidney-expressed gene 2 protein, Tmem176a, Gs188, Keg2
Dilution	WB=1:500-2000,IHC-P=1:100-500,IHC-F=1:100-500,IF=1:100-500
Format	0.01M TBS(pH7.4) with 1% BSA, 0.09% (W/V) sodium azide and 50% Glyce
Storage	Store at -20 °C for one year. Avoid repeated freeze/thaw cycles. When reconstituted in sterile pH 7.4 0.01M PBS or diluent of antibody the antibody

is stable for at least two weeks at 2-4 °C.

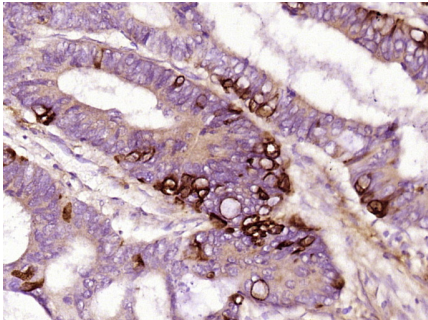
Protein Information

Name	Tmem176a
Synonyms	Gs188, Keg2
Cellular Location	Membrane; Multi-pass membrane protein
Tissue Location	Specifically expressed in lung, kidney and spleen.

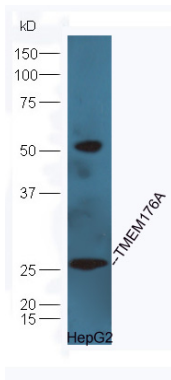
Background

This product as supplied is intended for research use only, not for use in human, therapeutic or diagnostic applications.

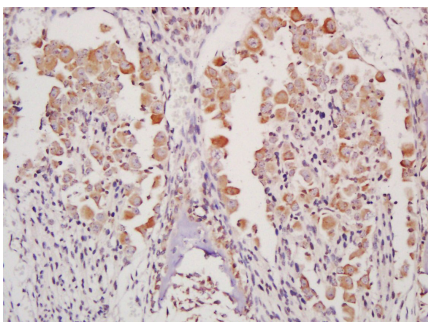
Images



Paraformaldehyde-fixed, paraffin embedded (human colon carcinoma); Antigen retrieval by boiling in sodium citrate buffer (pH6.0) for 15min; Block endogenous peroxidase by 3% hydrogen peroxide for 20 minutes; Blocking buffer (normal goat serum) at 37°C for 30min; Antibody incubation with (TMEM176A) Polyclonal Antibody, Unconjugated (AP93980) at 1:400 overnight at 4°C, followed by operating according to SP Kit(Rabbit) (sp-0023) instructions and DAB staining.

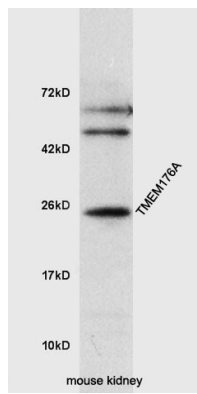


Protein: HepG2(human) lysates at 30ug; Primary: rabbit Anti-TMEM176A (AP93980) at 1:300; Secondary: HRP conjugated Goat-Anti-rabbit IgG(bs-0295G-HRP) at 1:5000; Predicted band size:26 kD Observed band size:26 kD

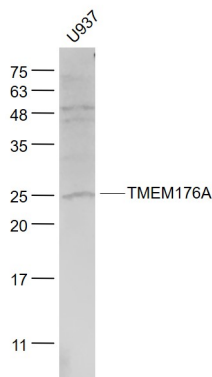


Tissue/cell: mouse embryo tissue; 4% Paraformaldehyde-fixed and paraffin-embedded; Antigen retrieval: citrate buffer (0.01M, pH 6.0), Boiling bathing for 15min; Block endogenous peroxidase by 3% Hydrogen peroxide for 30min; Blocking buffer (normal goat serum,C-0005) at 37°C for 20 min; Incubation: Anti-TMEM176A Polyclonal Antibody, Unconjugated(AP93980) 1:200, overnight at 4°C, followed by conjugation to the secondary antibody(SP-0023) and DAB(C-0010) staining

Protein: mouse kidney lysates, 30ug; Primary:



Anti-TMEM176A (AP93980) at 1:300; Secondary: HRP conjugated Goat Anti-Rabbit IgG(bs-0295G-HRP) at 1:5000; ECL excited the fluorescence; Predicted band size : 24kD Observed band size : 24kD



Sample: U937(Human) Cell Lysate at 30 ug Primary: Anti-TMEM176A (AP93980) at 1/1000 dilution Secondary: IRDye800CW Goat Anti-Rabbit IgG at 1/20000 dilution Predicted band size: 26 kD Observed band size: 25 kD

Please note: All products are 'FOR RESEARCH USE ONLY. NOT FOR USE IN DIAGNOSTIC OR THERAPEUTIC PROCEDURES'.