

DNA polymerase mu Rabbit pAb

DNA polymerase mu Rabbit pAb

Catalog # AP93976

Product Information

Application	WB
Primary Accession	Q9NP87.1
Reactivity	Human
Host	Rabbit
Clonality	Polyclonal
Calculated MW	55 kDa
Physical State	Liquid
Immunogen	KLH conjugated synthetic peptide derived from human DNA polymerase mu
Epitope Specificity	261-360/494
Isotype	IgG
Purity	affinity purified by Protein A
Buffer	0.01M TBS (pH7.4) with 1% BSA, 0.02% Proclin300 and 50% Glycerol.
SUBCELLULAR LOCATION	Nucleus.
SIMILARITY	Belongs to the DNA polymerase type-X family. Contains 1 BRCT domain.
Important Note	This product as supplied is intended for research use only, not for use in human, therapeutic or diagnostic applications.
Background Descriptions	DNA polymerase mu shares a number of characteristics with DNA polymerase Beta as well as with terminal deoxynucleotidyltransferase. Pol mu purportedly plays a role in microhomology mediated joining and the repair of double-stranded breaks. However, unlike other DNA polymerases, which show substrate specificity for deoxynucleotides, DNA Pol mu incorporates both deoxynucleotides and ribonucleotides in a template- directed manner. This unusual capability implies a novel role for this polymerase in DNA repair.

Additional Information

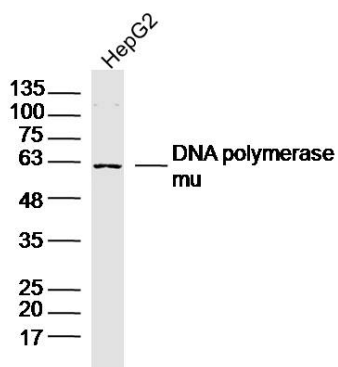
Target/Specificity	Expressed in a number of tissues. Abundant in thymus.
Dilution	WB=1:500-2000
Format	0.01M TBS(pH7.4) with 1% BSA, 0.09% (W/V) sodium azide and 50% Glyce
Storage	Store at -20 °C for one year. Avoid repeated freeze/thaw cycles. When reconstituted in sterile pH 7.4 0.01M PBS or diluent of antibody the antibody is stable for at least two weeks at 2-4 °C.

Protein Information

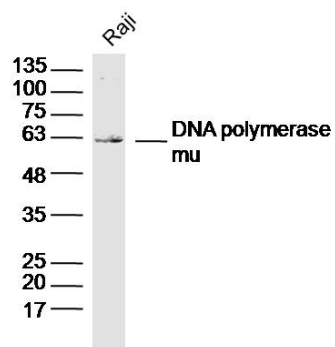
Background

This product as supplied is intended for research use only, not for use in human, therapeutic or diagnostic applications.

Images



Sample: HepG2 Cell (Human) Lysate at 30 ug
Primary: Anti-DNA polymerase mu (AP93976) at 1/300 dilution
Secondary: IRDye800CW Goat Anti-Rabbit IgG at 1/20000 dilution
Predicted band size: 55kD
Observed band size: 60kD



Sample: Raji Cell (Human) Lysate at 30 ug
Primary: Anti-DNA polymerase mu (AP93976) at 1/300 dilution
Secondary: IRDye800CW Goat Anti-Rabbit IgG at 1/20000 dilution
Predicted band size: 55kD
Observed band size: 60kD

Please note: All products are 'FOR RESEARCH USE ONLY. NOT FOR USE IN DIAGNOSTIC OR THERAPEUTIC PROCEDURES'.