

RSL1D1 Rabbit pAb

RSL1D1 Rabbit pAb
Catalog # AP93974

Product Information

Application	WB, IHC-P, IHC-F, IF
Reactivity	Mouse
Host	Rabbit
Clonality	Polyclonal
Calculated MW	55 KDa
Physical State	Liquid
Immunogen	KLH conjugated synthetic peptide derived from mouse RSL1D1
Epitope Specificity	311-410/452
Isotype	IgG
Purity	affinity purified by Protein A
Buffer	0.01M TBS (pH7.4) with 1% BSA, 0.02% Proclin300 and 50% Glycerol.
SUBCELLULAR LOCATION	Nucleus
SIMILARITY	Belongs to the ribosomal protein L1P family. Highly divergent.
Important Note	This product as supplied is intended for research use only, not for use in human, therapeutic or diagnostic applications.
Background Descriptions	RSL1D1, also known as CATX-11, PBK1, L12 or CSIG, is a 490 amino acid nuclear protein that belongs to the ribosomal protein L1P family. Expressed in placenta, RSL1D1 contains many phosphorylated amino acid residues and is encoded by a gene that maps to human chromosome 16p13.13. Chromosome 16 encodes over 900 genes in approximately 90 million base pairs, makes up nearly 3% of human cellular DNA and is associated with a variety of genetic disorders. The GAN gene is located on chromosome 16 and, with mutation, may lead to giant axonal neuropathy, a nervous system disorder characterized by increasing malfunction with growth. The rare disorder Rubinstein-Taybi syndrome is also associated with chromosome 16, though through the CREBBP gene which encodes a critical CREB binding protein. Signs of Rubinstein-Taybi include mental retardation and predisposition to tumor growth and white blood cell neoplasias.

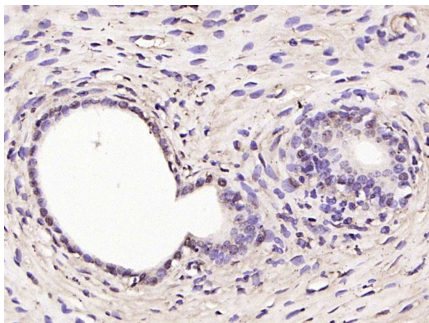
Additional Information

Target/Specificity	Placenta
Dilution	WB=1:500-2000,IHC-P=1:400-800,IHC-F=1:400-800,IF=1:100-500
Format	0.01M TBS(pH7.4) with 1% BSA, 0.09% (W/V) sodium azide and 50% Glyce
Storage	Store at -20 °C for one year. Avoid repeated freeze/thaw cycles. When reconstituted in sterile pH 7.4 0.01M PBS or diluent of antibody the antibody is stable for at least two weeks at 2-4 °C.

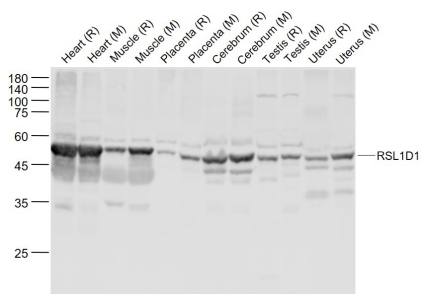
Background

This product as supplied is intended for research use only, not for use in human, therapeutic or diagnostic applications.

Images



Paraformaldehyde-fixed, paraffin embedded (rat uterus); Antigen retrieval by boiling in sodium citrate buffer (pH6.0) for 15min; Block endogenous peroxidase by 3% hydrogen peroxide for 20 minutes; Blocking buffer (normal goat serum) at 37°C for 30min; Antibody incubation with (RSL1D1) Polyclonal Antibody, Unconjugated (AP93974) at 1:200 overnight at 4°C, followed by operating according to SP Kit(Rabbit) (sp-0023) instructions and DAB staining.



Sample: Lane 1: Heart (Rat) Lysate at 40 ug Lane 2: Heart (Mouse) Lysate at 40 ug Lane 3: Muscle (Rat) Lysate at 40 ug Lane 4: Muscle (Mouse) Lysate at 40 ug Lane 5: Placenta (Rat) Lysate at 40 ug Lane 6: Placenta (Mouse) Lysate at 40 ug Lane 7: Cerebrum (Rat) Lysate at 40 ug Lane 8: Cerebrum (Mouse) Lysate at 40 ug Lane 9: Testis (Rat) Lysate at 40 ug Lane 10: Testis (Mouse) Lysate at 40 ug Lane 11: Uterus (Rat) Lysate at 40 ug Lane 12: Uterus (Mouse) Lysate at 40 ug Primary: Anti-RSL1D1 (AP93974) at 1/1000 dilution Secondary: IRDye800CW Goat Anti-Rabbit IgG at 1/20000 dilution Predicted band size: 55 kD Observed band size: 52 kD

Please note: All products are 'FOR RESEARCH USE ONLY. NOT FOR USE IN DIAGNOSTIC OR THERAPEUTIC PROCEDURES'.