

GFP Rabbit pAb

GFP Rabbit pAb

Catalog # AP93936

Product Information

Application	WB
Host	Rabbit
Clonality	Polyclonal
Physical State	Liquid
Immunogen	KLH conjugated synthetic peptide derived from belt jellyfish GFP
Epitope Specificity	151-238/238
Isotype	IgG
Purity	affinity purified by Protein A
Buffer	0.01M TBS (pH7.4) with 1% BSA, 0.02% Proclin300 and 50% Glycerol.
SIMILARITY	Belongs to the GFP family.
SUBUNIT	Monomer.
Post-translational modifications	Contains a chromophore consisting of modified amino acid residues. The chromophore is formed by autocatalytic backbone condensation between Ser-65 and Gly-67, and oxidation of Tyr-66 to didehydrotyrosine. Maturation of the chromophore requires nothing other than molecular oxygen.
Important Note	This product as supplied is intended for research use only, not for use in human, therapeutic or diagnostic applications.
Background Descriptions	Enhanced Blue Fluorescent Protein (EBFP) emits a strong blue fluorescence. EBFP can be used as protein "tags" to study the sub-cellular localization of proteins and/or their translocation upon stimulation or as markers for transfection in transient and stable expression systems.

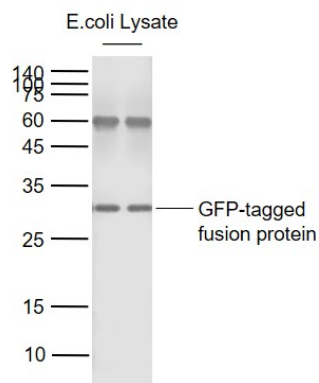
Additional Information

Target/Specificity	Photocytes.
Dilution	WB=1:20000-50000
Format	0.01M TBS(pH7.4) with 1% BSA, 0.09% (W/V) sodium azide and 50% Glyce
Storage	Store at -20 °C for one year. Avoid repeated freeze/thaw cycles. When reconstituted in sterile pH 7.4 0.01M PBS or diluent of antibody the antibody is stable for at least two weeks at 2-4 °C.

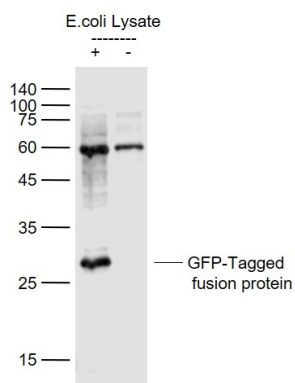
Background

This product as supplied is intended for research use only, not for use in human, therapeutic or diagnostic applications.

Images



Sample: GFP-Tagged fusion protein Overexpression E.coli Lysate (Cat#: bs-33009P) at 4 ug Primary: Anti-GFP (AP93936) at 1/20000 dilution Secondary: IRDye800CW Goat Anti-Rabbit IgG at 1/20000 dilution Predicted band size: 28 kD Observed band size: 30 kD



Sample: Lane 1: GFP-Tagged fusion protein (full length) Overexpression E.coli Lysate (Cat#: bs-33009P) at 4 ug Lane 2: Control (-) E.coli Lysate at 4 ug Primary: Anti-GFP (AP93936) at 1/1000 dilution Secondary: IRDye800CW Goat Anti-Rabbit IgG at 1/20000 dilution Predicted band size: 28 kD Observed band size: 28 kD

Please note: All products are 'FOR RESEARCH USE ONLY. NOT FOR USE IN DIAGNOSTIC OR THERAPEUTIC PROCEDURES'.