

HPV16 E7 Rabbit pAb

HPV16 E7 Rabbit pAb

Catalog # AP93933

Product Information

Application	WB, IHC-P, IHC-F, IF
Host	Rabbit
Clonality	Polyclonal
Calculated MW	11 KDa
Physical State	Liquid
Immunogen	KLH conjugated synthetic peptide derived from HPV16 E7 protein
Epitope Specificity	41-90/98
Isotype	IgG
Purity	affinity purified by Protein A
Buffer	0.01M TBS (pH7.4) with 1% BSA, 0.02% Proclin300 and 50% Glycerol.
Important Note	This product as supplied is intended for research use only, not for use in human, therapeutic or diagnostic applications.

Additional Information

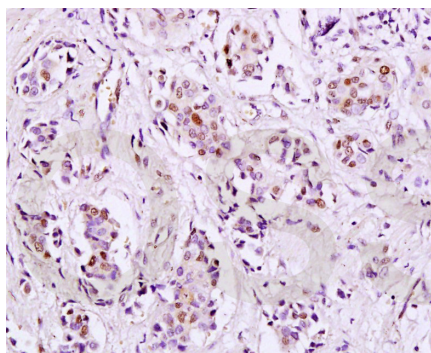
Dilution	WB=1:500-2000,IHC-P=1:100-500,IHC-F=1:100-500,IF=1:100-500,Flow-Cyt=1ug /Test
Format	0.01M TBS(pH7.4) with 1% BSA, 0.09% (W/V) sodium azide and 50% Glyce
Storage	Store at -20 °C for one year. Avoid repeated freeze/thaw cycles. When reconstituted in sterile pH 7.4 0.01M PBS or diluent of antibody the antibody is stable for at least two weeks at 2-4 °C.

Background

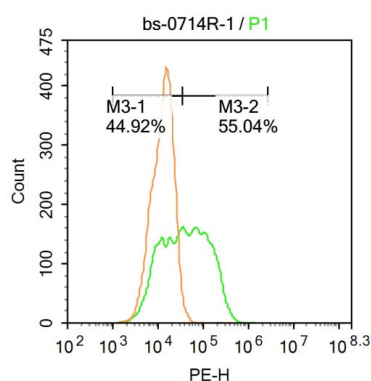
This product as supplied is intended for research use only, not for use in human, therapeutic or diagnostic applications.

Images

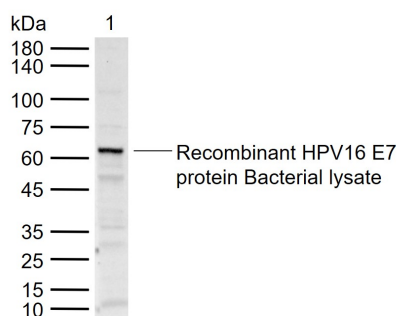
Tissue/cell: human breast cancer; 4%
Paraformaldehyde-fixed and paraffin-embedded; Antigen retrieval: citrate buffer (0.01M, pH 6.0), Boiling bathing for 15min; Block endogenous peroxidase by 3% Hydrogen peroxide for 30min; Blocking buffer (normal goat serum,C-0005) at 37°C for 20 min; Incubation: Anti-HPV16-E7 Polyclonal Antibody, Unconjugated(AP93933) 1:200, overnight at 4°C, followed by conjugation to the secondary antibody(SP-0023) and



DAB(C-0010) staining



Blank control: Hela. Primary Antibody (green line): Rabbit Anti-HPV16 E7 antibody (AP93933) Dilution: 1 μ g /10⁶ cells; Isotype Control Antibody (orange line): Rabbit IgG . Secondary Antibody : Goat anti-rabbit IgG-PE Dilution: 1 μ g /test. Protocol The cells were fixed with 4% PFA (10min at room temperature)and then permeabilized with 90% ice-cold methanol for 20 min at -20°C. The cells were then incubated in 5%BSA to block non-specific protein-protein interactions for 30 min at at room temperature .Cells stained with Primary Antibody for 30 min at room temperature. The secondary antibody used for 40 min at room temperature. Acquisition of 20,000 events was performed.



Sample: Lane 1: Recombinant HPV16 E7 protein Bacterial lysate, DsbC & His(bs-49101L) Primary: Anti-HPV16 E7 (AP93933) at 1/1000 dilution Secondary: IRDye800CW Goat Anti-Rabbit IgG at 1/20000 dilution Predicted band size: 11 kDa Observed band size: 61 kDa

Please note: All products are 'FOR RESEARCH USE ONLY. NOT FOR USE IN DIAGNOSTIC OR THERAPEUTIC PROCEDURES'.