

# EGFL7 Rabbit pAb

EGFL7 Rabbit pAb  
Catalog # AP93931

## Product Information

---

<b>Application</b>	WB
<b>Reactivity</b>	Mouse
<b>Host</b>	Rabbit
<b>Clonality</b>	Polyclonal
<b>Calculated MW</b>	28 KDa
<b>Physical State</b>	Liquid
<b>Immunogen</b>	KLH conjugated synthetic peptide derived from mouse EGFL7
<b>Isotype</b>	IgG
<b>Purity</b>	affinity purified by Protein A
<b>Buffer</b>	0.01M TBS (pH7.4) with 1% BSA, 0.02% Proclin300 and 50% Glycerol.
<b>SUBCELLULAR LOCATION</b>	Secreted (By similarity).
<b>SIMILARITY</b>	Contains 2 EGF-like domains. Contains 1 EMI domain.
<b>Important Note</b>	This product as supplied is intended for research use only, not for use in human, therapeutic or diagnostic applications.
<b>Background Descriptions</b>	EGFL7 (EGF-like domain-containing protein 7) regulates vascular tubulogenesis in vivo. During sprouting angiogenesis, groups of endothelial cells (ECs) migrate together in units called sprouts. EGFL7 regulates the proper spatial organization of ECs within each sprout and influences their collective movement. It inhibits platelet-derived growth factor (PDGF)-BB-induced smooth muscle cell migration and promotes endothelial cells adhesion to the substrate in vitro.

## Additional Information

---

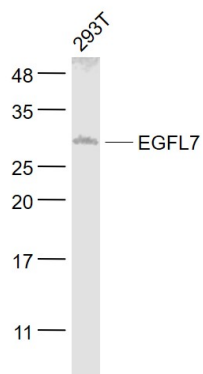
<b>Target/Specificity</b>	Expressed specifically by endothelial cells of the highly vascularized organs heart, lung and kidney.
<b>Dilution</b>	WB=1:500-2000
<b>Format</b>	0.01M TBS(pH7.4) with 1% BSA, 0.09% (W/V) sodium azide and 50% Glyce
<b>Storage</b>	Store at -20 °C for one year. Avoid repeated freeze/thaw cycles. When reconstituted in sterile pH 7.4 0.01M PBS or diluent of antibody the antibody is stable for at least two weeks at 2-4 °C.

## Background

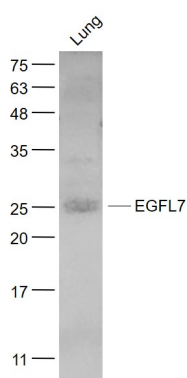
---

This product as supplied is intended for research use only, not for use in human, therapeutic or diagnostic applications.

## Images



Sample: 293T(Human) Cell Lysate at 30 ug Primary: Anti-EGFL7 (AP93931) at 1/1000 dilution Secondary: IRDye800CW Goat Anti-Rabbit IgG at 1/20000 dilution  
Predicted band size: 28 kD Observed band size: 28 kD



Sample: Lung (Mouse) Lysate at 40 ug Primary: Anti-EGFL7 (AP93931) at 1/1000 dilution Secondary: IRDye800CW Goat Anti-Rabbit IgG at 1/20000 dilution  
Predicted band size: 28 kD Observed band size: 25 kD

Please note: All products are 'FOR RESEARCH USE ONLY. NOT FOR USE IN DIAGNOSTIC OR THERAPEUTIC PROCEDURES'.