

MX1 Rabbit pAb

MX1 Rabbit pAb
Catalog # AP93924

Product Information

Application	WB
Reactivity	Mouse
Host	Rabbit
Clonality	Polyclonal
Calculated MW	72 KDa
Physical State	Liquid
Immunogen	KLH conjugated synthetic peptide derived from mouse IFI78/MX1
Epitope Specificity	261-360/631
Isotype	IgG
Purity	affinity purified by Protein A
Buffer	0.01M TBS (pH7.4) with 1% BSA, 0.02% Proclin300 and 50% Glycerol.
SUBCELLULAR LOCATION	Secreted, extracellular space. Nucleus. Note=Translocates into the nuclei of HSV-1 infected cells.
SIMILARITY	Belongs to the TRAFAC class dynamin-like GTPase superfamily. Dynamin/Fzo/YdjA family.
SUBUNIT	Homotetramer.
Important Note	This product as supplied is intended for research use only, not for use in human, therapeutic or diagnostic applications.
Background Descriptions	bs-6653P is onesynthetic peptide derived from human MX1. The Dynamin family of microtubule-associated proteins function as GTPases that are involved in microtubule bundling and endocytosis. In mice, Mx2 (myxovirus resistance protein 2) and Mx1 (myxovirus resistance protein 1) are members of the Dynamin family that are involved in the immune response to viral infections. Localized to the cytoplasm, Mx2 contains one GED domain and is expressed in response to viral infection or treatment by IFN-alpha/IFN-beta. Once expression is induced, Mx2 accumulates in the cytoplasm and inhibits the replication of vesicular stomatitis virus (VSV), thereby conferring resistance to VSV infection. Unlike Mx2, Mx1 is localized to the nucleus where, upon induction by IFN-alpha/IFN-beta, it provides selective resistance to infection by the highly lethal H5N1 influenza virus. In humans, MxA and MxB function in a similar manner to Mx1 and Mx2, conferring resistance to specific target viruses. Mx3 is a rat-specific member of the myxovirus resistance protein family.

Additional Information

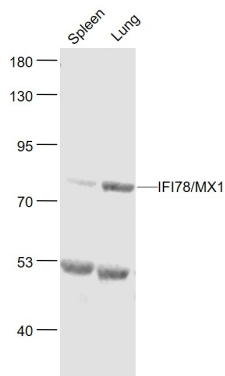
Dilution	WB=1:500-2000
Format	0.01M TBS(pH7.4) with 1% BSA, 0.09% (W/V) sodium azide and 50% Glyce
Storage	Store at -20 °C for one year. Avoid repeated freeze/thaw cycles. When

reconstituted in sterile pH 7.4 0.01M PBS or diluent of antibody the antibody is stable for at least two weeks at 2-4 °C.

Background

This product as supplied is intended for research use only, not for use in human, therapeutic or diagnostic applications.

Images



Sample: Spleen (Mouse) Lysate at 40 ug Lung (Mouse) Lysate at 40 ug
Primary: Anti- IFI78/MX1 (AP93924) at 1/1000 dilution
Secondary: IRDye800CW Goat Anti-Rabbit IgG at 1/20000 dilution
Predicted band size: 72 kD
Observed band size: 72 kD

Please note: All products are 'FOR RESEARCH USE ONLY. NOT FOR USE IN DIAGNOSTIC OR THERAPEUTIC PROCEDURES'.