

NIS Rabbit pAb

NIS Rabbit pAb
Catalog # AP93923

Product Information

Application	WB
Reactivity	Mouse
Host	Rabbit
Clonality	Polyclonal
Calculated MW	68 KDa
Physical State	Liquid
Immunogen	KLH conjugated synthetic peptide derived from mouse NIS
Epitope Specificity	580-643/643
Isotype	IgG
Purity	affinity purified by Protein A
Buffer	0.01M TBS (pH7.4) with 1% BSA, 0.02% Proclin300 and 50% Glycerol.
SUBCELLULAR LOCATION	Membrane; Multi-pass membrane protein.
SIMILARITY	Belongs to the sodium:solute symporter (SSF) (TC 2.A.21) family.
DISEASE	Thyroid dysmorphogenesis 1 (TDH1) [MIM:274400]: A disorder characterized by the inability of the thyroid to maintain a concentration difference of readily exchangeable iodine between the plasma and the thyroid gland, leading to congenital hypothyroidism. Note=The disease is caused by mutations affecting the gene represented in this entry.
Important Note	This product as supplied is intended for research use only, not for use in human, therapeutic or diagnostic applications.
Background Descriptions	catalyzes Na ⁺ /I ⁻ symporter activity plays a role in iodide transport and thyroid hormone generation. Human Sodium Iodide Symporter (hNIS) is responsible for iodide concentrating ability within thyroid follicular cells. It is a membrane bound glycoprotein with 13 membrane spanning domains and 14 extramembranous domains. It may represent an autoantigen in thyroid.

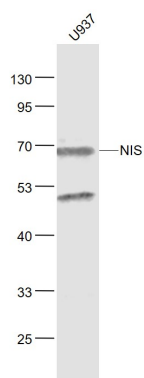
Additional Information

Target/Specificity	Expression is primarily in thyroid tissue, but also to a lower extent in mammary gland and ovary. Expression is reduced in tumors.
Dilution	WB=1:500-2000
Format	0.01M TBS(pH7.4) with 1% BSA, 0.09% (W/V) sodium azide and 50% Glyce
Storage	Store at -20 °C for one year. Avoid repeated freeze/thaw cycles. When reconstituted in sterile pH 7.4 0.01M PBS or diluent of antibody the antibody is stable for at least two weeks at 2-4 °C.

Background

This product as supplied is intended for research use only, not for use in human, therapeutic or diagnostic applications.

Images



Sample: U937(Human) Cell Lysate at 30 ug Primary: Anti-NIS (AP93923) at 1/1000 dilution Secondary: IRDye800CW Goat Anti-Rabbit IgG at 1/20000 dilution Predicted band size: 68 kD Observed band size: 68 kD

Please note: All products are 'FOR RESEARCH USE ONLY. NOT FOR USE IN DIAGNOSTIC OR THERAPEUTIC PROCEDURES'.