

Beta-casein Rabbit pAb

Beta-casein Rabbit pAb

Catalog # AP93917

Product Information

Application	WB
Host	Rabbit
Clonality	Polyclonal
Calculated MW	24 KDa
Physical State	Liquid
Immunogen	KLH conjugated synthetic peptide derived from cow Beta-casein
Epitope Specificity	16-100/224
Isotype	IgG
Purity	affinity purified by Protein A
Buffer	0.01M TBS (pH7.4) with 1% BSA, 0.02% Proclin300 and 50% Glycerol.
SUBCELLULAR LOCATION	Secreted.
SIMILARITY	Belongs to the beta-casein family.
Important Note	This product as supplied is intended for research use only, not for use in human, therapeutic or diagnostic applications.
Background Descriptions	Milk proteins are crucial for the development of all newborn mammals and caseins constitute the major proteins in mammalian milk. b- and k-caseins are the only caseins present in human milk. The b-casein/k-casein ratio is higher in colostrum than in transitional and mature milk and is related to a better digestibility of colostrum casein micelles by the neonate during the first days of life. Human b-casein-encoding gene (Bca) contains a highly phosphorylated site, which is responsible for the calcium-binding capacity of b-casein. A common set of transcription factors are required for the expression of b-casein. Multiple binding sites for Stat5, C/EBPb (CCAAT/enhancer-binding protein) and several half-sites for glucocorticoid receptor (GR) are identified in the distal human enhancer of the b-casein gene. b-casein gene transcription is regulated primarily by a composite response element (CoRE), which integrates signaling from the lactogenic hormones PRL, insulin and hydrocortisone in mammary epithelial cells. NFkB functions as a negative regulator of b-casein gene expression during pregnancy by interfering with Stat5 tyrosine phosphorylation

Additional Information

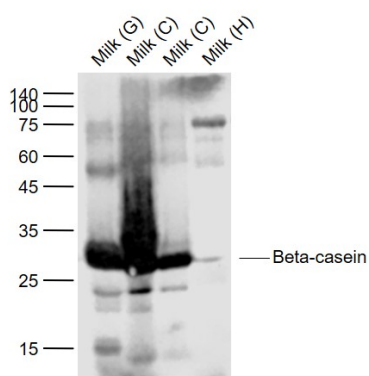
Target/Specificity	Mammary gland specific. Secreted in milk.
Dilution	WB=1:500-2000
Format	0.01M TBS(pH7.4) with 1% BSA, 0.09% (W/V) sodium azide and 50% Glyce
Storage	Store at -20 °C for one year. Avoid repeated freeze/thaw cycles. When reconstituted in sterile pH 7.4 0.01M PBS or diluent of antibody the antibody

is stable for at least two weeks at 2-4 °C.

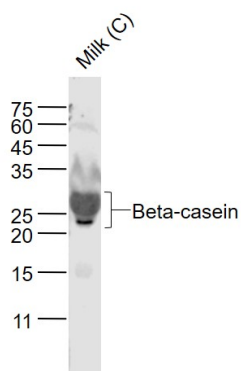
Background

This product as supplied is intended for research use only, not for use in human, therapeutic or diagnostic applications.

Images



Sample: Lane 1: Milk (Goat) Lysate at 2 ug Lane 2: Milk (Cow) Lysate at 30 ug Lane 3: Milk (Cow) Lysate at 3 ug Lane 4: Milk (Human) Lysate at 30 ug Primary: Anti-Beta-casein (AP93917) at 1/1000 dilution Secondary: IRDye800CW Goat Anti-Rabbit IgG at 1/20000 dilution Predicted band size: 25-29 kD Observed band size: 25-29 kD



Sample: Lane 1: Milk (Cow) Lysate at 40 ug Primary: Anti-Beta-casein (AP93917) at 1/1000 dilution Secondary: IRDye800CW Goat Anti-Rabbit IgG at 1/20000 dilution Predicted band size: 24 kD Observed band size: 24 kD

Please note: All products are 'FOR RESEARCH USE ONLY. NOT FOR USE IN DIAGNOSTIC OR THERAPEUTIC PROCEDURES'.