

TUBA3E (Tubulin alpha 3e) (16K16) Mouse Monoclonal antibody

TUBA3E (Tubulin alpha 3e) (16K16) Mouse Monoclonal antibody
Catalog # AP93915

Product Information

Application	WB, IF
Primary Accession	Q6PEY2
Reactivity	Rat, Human, Mouse
Clonality	Monoclonal
Calculated MW	49859

Additional Information

Gene ID	112714
Other Names	Tubulin alpha-3E chain, 3.6.5.-, Alpha-tubulin 3E, Detyrosinated tubulin alpha-3E chain, TUBA3E
Dilution	WB~~1:1000 IF~~1:50~200
Storage Conditions	-20°C

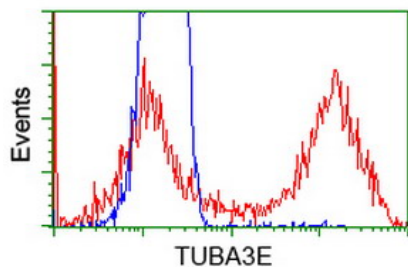
Protein Information

Name	TUBA3E
Function	Tubulin is the major constituent of microtubules, a cylinder consisting of laterally associated linear protofilaments composed of alpha- and beta-tubulin heterodimers. Microtubules grow by the addition of GTP-tubulin dimers to the microtubule end, where a stabilizing cap forms. Below the cap, tubulin dimers are in GDP-bound state, owing to GTPase activity of alpha-tubulin.
Cellular Location	Cytoplasm, cytoskeleton.

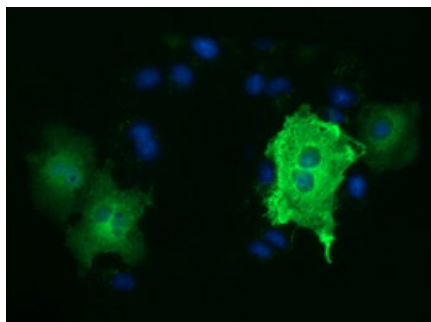
Background

Tubulin is the major constituent of microtubules. It binds two moles of GTP, one at an exchangeable site on the beta chain and one at a non-exchangeable site on the alpha-chain (By similarity).

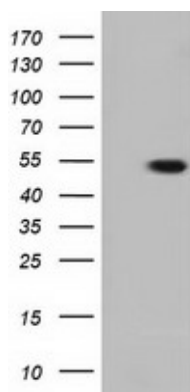
Images



HEK293T cells transfected with either overexpress plasmid (Red) or empty vector control plasmid (Blue) were immunostained by anti-TUBA3E antibody (AP93915), and then analyzed by flow cytometry.



Anti-TUBA3E mouse monoclonal antibody (AP93915) immunofluorescent staining of COS7 cells transiently transfected by pCMV6-ENTRY TUBA3E .



HEK293T cells were transfected with the pCMV6-ENTRY control (Left lane) or pCMV6-ENTRY TUBA3E (Right lane) cDNA for 48 hrs and lysed. Equivalent amounts of cell lysates (5 ug per lane) were separated by SDS-PAGE and immunoblotted with anti-TUBA3E. Positive lysates (100ug) and (20ug) can be purchased separately from biodragon.

Please note: All products are 'FOR RESEARCH USE ONLY. NOT FOR USE IN DIAGNOSTIC OR THERAPEUTIC PROCEDURES'.