

LRRC50 (11E13) Mouse Monoclonal antibody

LRRC50 (11E13) Mouse Monoclonal antibody

Catalog # AP93913

Product Information

Application	WB
Primary Accession	Q8NEP3
Reactivity	Rat, Human, Mouse, Monkey, Dog
Clonality	Monoclonal
Calculated MW	80026

Additional Information

Gene ID	123872
Other Names	Dynein axonemal assembly factor 1, Leucine-rich repeat-containing protein 50, DNAAF1, LRRC50
Dilution	WB~~1:1000
Storage Conditions	-20°C

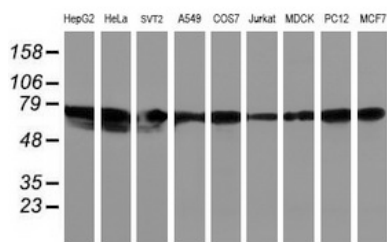
Protein Information

Name	DNAAF1
Synonyms	LRRC50
Function	Cilium-specific protein required for the stability of the ciliary architecture. Plays a role in cytoplasmic preassembly of dynein arms. Involved in regulation of microtubule-based cilia and actin-based brush border microvilli.
Cellular Location	Cell projection, cilium. Cytoplasm Cytoplasm, cytoskeleton, spindle pole Note=In HEK293T cells, it is diffusely cytoplasmic and concentrates at the mitotic spindle poles, while in MDCK cells, it localizes in the cilium. In vivo, this protein is probably restricted to the cilium
Tissue Location	Mainly expressed in trachea and testis.

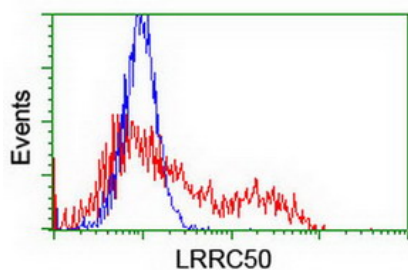
Background

The protein encoded by this gene is cilium-specific and is required for the stability of the ciliary architecture. It is involved in the regulation of microtubule-based cilia and actin-based brush border microvilli. Mutations in this gene are associated with primary ciliary dyskinesia-13. COMPLETENESS: complete on the 3' end.

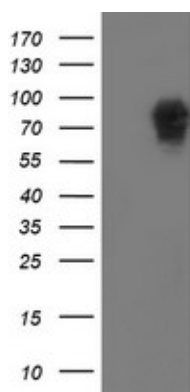
Images



Western blot analysis of extracts (35ug) from 9 different cell lines by using anti-LRRC50 monoclonal antibody (HepG2: human; HeLa: human; SVT2: mouse; A549: human; COS7: monkey; Jurkat: human; MDCK: canine; PC12: rat; MCF7: human).



HEK293T cells transfected with either overexpress plasmid (Red) or empty vector control plasmid (Blue) were immunostained by anti-LRRC50 antibody (AP93913), and then analyzed by flow cytometry.



HEK293T cells were transfected with the pCMV6-ENTRY control (Left lane) or pCMV6-ENTRY LRRC50 (Right lane) cDNA for 48 hrs and lysed. Equivalent amounts of cell lysates (5 ug per lane) were separated by SDS-PAGE and immunoblotted with anti-LRRC50 (Cat# AP93913). Positive lysates (100ug) and (20ug) can be purchased separately from biodragon.

Please note: All products are 'FOR RESEARCH USE ONLY. NOT FOR USE IN DIAGNOSTIC OR THERAPEUTIC PROCEDURES'.