

# LRRC50 (19T11) Mouse Monoclonal antibody

LRRC50 (19T11) Mouse Monoclonal antibody

Catalog # AP93911

## Product Information

---

<b>Application</b>	WB, IF
<b>Primary Accession</b>	<a href="#">Q8NEP3</a>
<b>Reactivity</b>	Human
<b>Clonality</b>	Monoclonal
<b>Calculated MW</b>	80026

## Additional Information

---

<b>Gene ID</b>	123872
<b>Other Names</b>	Dynein axonemal assembly factor 1, Leucine-rich repeat-containing protein 50, DNAAF1, LRRC50
<b>Dilution</b>	WB~~1:1000 IF~~1:50~200
<b>Storage Conditions</b>	-20°C

## Protein Information

---

<b>Name</b>	DNAAF1
<b>Synonyms</b>	LRRC50
<b>Function</b>	Cilium-specific protein required for the stability of the ciliary architecture. Plays a role in cytoplasmic preassembly of dynein arms. Involved in regulation of microtubule-based cilia and actin-based brush border microvilli.
<b>Cellular Location</b>	Cell projection, cilium. Cytoplasm Cytoplasm, cytoskeleton, spindle pole Note=In HEK293T cells, it is diffusely cytoplasmic and concentrates at the mitotic spindle poles, while in MDCK cells, it localizes in the cilium. In vivo, this protein is probably restricted to the cilium
<b>Tissue Location</b>	Mainly expressed in trachea and testis.

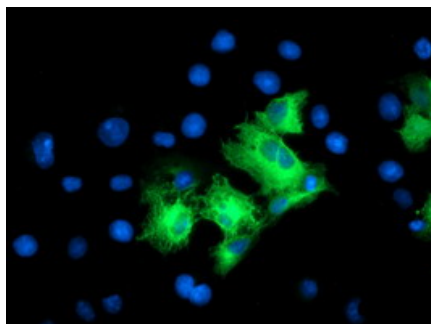
## Background

---

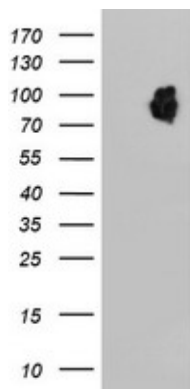
The protein encoded by this gene is cilium-specific and is required for the stability of the ciliary architecture. It is involved in the regulation of microtubule-based cilia and actin-based brush border microvilli. Mutations in this gene are associated with primary ciliary dyskinesia-13. COMPLETENESS: complete on the 3' end.

## Images

---



Anti-LRRC50 mouse monoclonal antibody (AP93911) immunofluorescent staining of COS7 cells transiently transfected by pCMV6-ENTRY LRRC50 .



HEK293T cells were transfected with the pCMV6-ENTRY control (Left lane) or pCMV6-ENTRY LRRC50 (Right lane) cDNA for 48 hrs and lysed. Equivalent amounts of cell lysates (5 ug per lane) were separated by SDS-PAGE and immunoblotted with anti-LRRC50. Positive lysates (100ug) and (20ug) can be purchased separately from biodragon.

Please note: All products are 'FOR RESEARCH USE ONLY. NOT FOR USE IN DIAGNOSTIC OR THERAPEUTIC PROCEDURES'.