

# C14orf80 (12B11) Mouse Monoclonal antibody

C14orf80 (12B11) Mouse Monoclonal antibody

Catalog # AP93910

## Product Information

---

Application	WB, IHC
Primary Accession	<a href="#">Q86SX3</a>
Reactivity	Human
Clonality	Monoclonal
Calculated MW	54231

## Additional Information

---

Gene ID	283643
Other Names	Tubulin epsilon and delta complex protein 1, TEDC1 ( <a href="#">HGNC:20127</a> )
Dilution	WB~~1:1000 IHC~~1:100~500
Storage Conditions	-20°C

## Protein Information

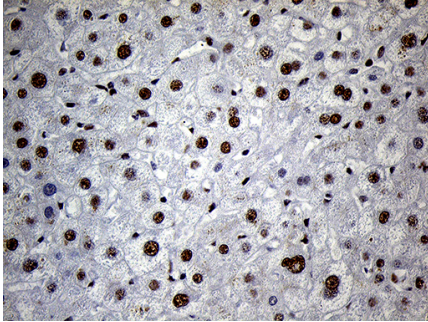
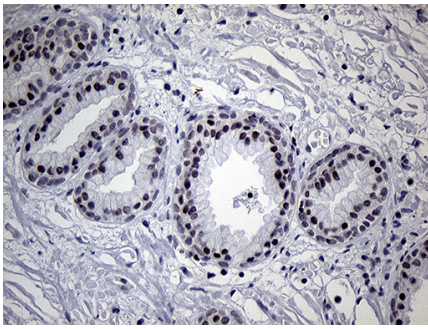
---

Name	TEDC1 ( <a href="#">HGNC:20127</a> )
Function	Acts as a positive regulator of ciliary hedgehog signaling. Required for centriole stability (By similarity). May play a role in counteracting perturbation of actin filaments, such as after treatment with the actin depolymerizing microbial metabolite Chivosazole F (PubMed: <a href="#">28796488</a> ).
Cellular Location	Cell projection, cilium {ECO:0000250 UniProtKB:Q3UK37}. Cytoplasm, cytoskeleton, microtubule organizing center, centrosome, centriole {ECO:0000250 UniProtKB:Q3UK37}

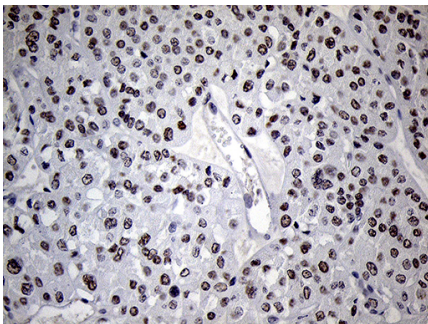
## Images

---

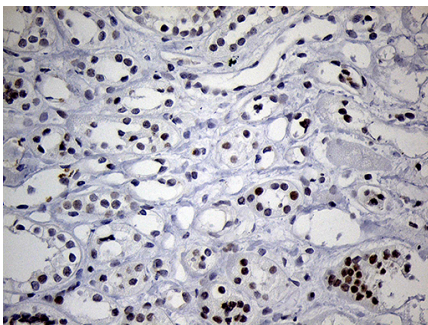
Immunohistochemical staining of paraffin-embedded Human prostate tissue within the normal limits using anti-C14orf80 mouse monoclonal antibody.  
(Heat-induced epitope retrieval by 1mM EDTA in 10mM Tris buffer (pH8.5) at 120°C for 3min, AP93910) (1:250)



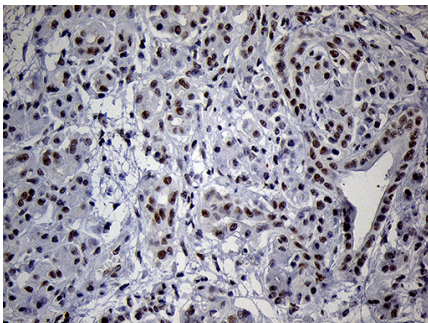
Immunohistochemical staining of paraffin-embedded Human liver tissue within the normal limits using anti-C14orf80 mouse monoclonal antibody. (Heat-induced epitope retrieval by 1mM EDTA in 10mM Tris buffer (pH8.5) at 120°C for 3min, AP93910) (1:250)



Immunohistochemical staining of paraffin-embedded Carcinoma of Human kidney tissue using anti-C14orf80 mouse monoclonal antibody. (Heat-induced epitope retrieval by 1mM EDTA in 10mM Tris buffer (pH8.5) at 120°C for 3min, AP93910) (1:250)

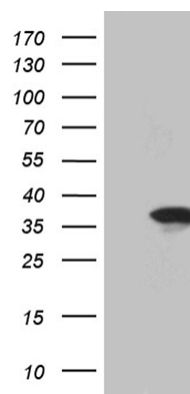


Immunohistochemical staining of paraffin-embedded Human Kidney tissue within the normal limits using anti-C14orf80 mouse monoclonal antibody. (Heat-induced epitope retrieval by 1mM EDTA in 10mM Tris buffer (pH8.5) at 120°C for 3min, AP93910) (1:250)



Immunohistochemical staining of paraffin-embedded Human pancreas tissue within the normal limits using anti-C14orf80 mouse monoclonal antibody. (Heat-induced epitope retrieval by 1mM EDTA in 10mM Tris buffer (pH8.5) at 120°C for 3min, AP93910) (1:250)

HEK293T cells were transfected with the pCMV6-ENTRY control (Left lane) or pCMV6-ENTRY C14orf80 (Right lane) cDNA for 48 hrs and lysed. Equivalent amounts of cell lysates (5 ug per lane) were separated by SDS-PAGE and immunoblotted with anti-C14orf80 (Cat# AP93910)(1:2000).



Please note: All products are 'FOR RESEARCH USE ONLY. NOT FOR USE IN DIAGNOSTIC OR THERAPEUTIC PROCEDURES'.