

LSM11 (7Z18) Mouse Monoclonal antibody

LSM11 (7Z18) Mouse Monoclonal antibody

Catalog # AP93908

Product Information

Application	WB, IHC
Primary Accession	P83369
Reactivity	Rat, Human, Mouse
Clonality	Monoclonal
Calculated MW	39500

Additional Information

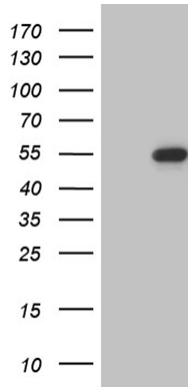
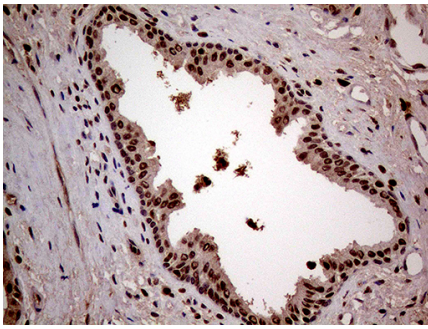
Gene ID	134353
Other Names	U7 snRNA-associated Sm-like protein LSm11, LSM11 {ECO:0000303 PubMed:12975319, ECO:0000312 HGNC:HGNC:30860}
Dilution	WB~~1:1000 IHC~~1:100~500
Storage Conditions	-20°C

Protein Information

Name	LSM11 {ECO:0000303 PubMed:12975319, ECO:0000312 HGNC:HGNC:30860}
Function	Component of the U7 snRNP complex that is involved in the histone 3'-end pre-mRNA processing (PubMed: 11574479 , PubMed: 16914750 , PubMed: 33230297). Increases U7 snRNA levels but not histone 3'-end pre-mRNA processing activity, when overexpressed (PubMed: 11574479 , PubMed: 16914750). Required for cell cycle progression from G1 to S phases (By similarity). Binds specifically to the Sm-binding site of U7 snRNA (PubMed: 11574479 , PubMed: 16914750).
Cellular Location	Nucleus.

Images

Immunohistochemical staining of paraffin-embedded Carcinoma of Human prostate tissue using anti-LSM11 mouse monoclonal antibody. (Heat-induced epitope retrieval by 1mM EDTA in 10mM Tris buffer (pH8.5) at 120°C for 3min, AP93908) (1:2000)



HEK293T cells were transfected with the pCMV6-ENTRY control (Left lane) or pCMV6-ENTRY LSM11 (Right lane) cDNA for 48 hrs and lysed. Equivalent amounts of cell lysates (5 ug per lane) were separated by SDS-PAGE and immunoblotted with anti-LSM11 (Cat# AP93908)(1:2000). Positive lysates (100ug) and (20ug) can be purchased separately from biodragon.

Please note: All products are 'FOR RESEARCH USE ONLY. NOT FOR USE IN DIAGNOSTIC OR THERAPEUTIC PROCEDURES'.