

# HSCB (11S6) Mouse Monoclonal antibody

HSCB (11S6) Mouse Monoclonal antibody

Catalog # AP93906

## Product Information

---

Application	WB, IHC
Primary Accession	<a href="#">Q8IWL3</a>
Reactivity	Rat, Human, Mouse, Monkey, Dog
Clonality	Monoclonal
Calculated MW	27422

## Additional Information

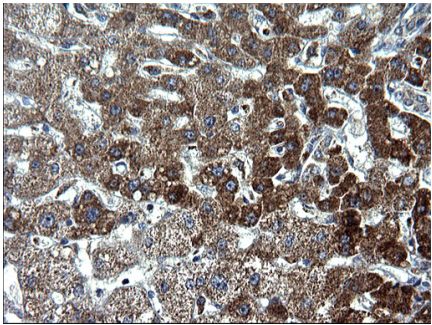
---

Gene ID	150274
Other Names	Iron-sulfur cluster co-chaperone protein HscB, DnaJ homolog subfamily C member 20, Iron-sulfur cluster co-chaperone protein HscB, cytoplasmic, C-HSC20, Iron-sulfur cluster co-chaperone protein HscB, mitochondrial, HSCB ( <a href="#">HGNC:28913</a> ), DNAJC20, HSC20
Dilution	WB~~1:1000 IHC~~1:100~500
Storage Conditions	-20°C

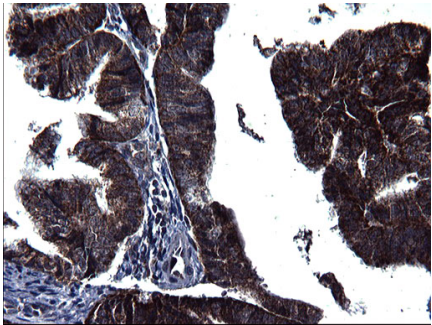
## Protein Information

---

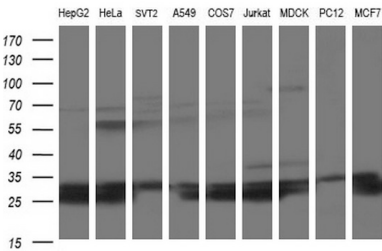
Name	HSCB ( <a href="#">HGNC:28913</a> )
Synonyms	DNAJC20, HSC20
Function	[Iron-sulfur cluster co-chaperone protein HscB, mitochondrial]: Acts as a co-chaperone in iron-sulfur cluster assembly in mitochondria (PubMed: <a href="#">20668094</a> ). Required for incorporation of iron- sulfur clusters into SDHB, the iron-sulfur protein subunit of succinate dehydrogenase that is involved in complex II of the mitochondrial electron transport chain (PubMed: <a href="#">26749241</a> ). Recruited to SDHB by interaction with SDHAF1 which first binds SDHB and then recruits the iron-sulfur transfer complex formed by HSC20, HSPA9 and ISCU through direct binding to HSC20 (PubMed: <a href="#">26749241</a> ). Plays an essential role in hematopoiesis (By similarity).
Cellular Location	[Iron-sulfur cluster co-chaperone protein HscB, cytoplasmic]: Cytoplasm
Tissue Location	Expressed in lung, brain, stomach, spleen, ovary, testis, liver, muscle and heart.



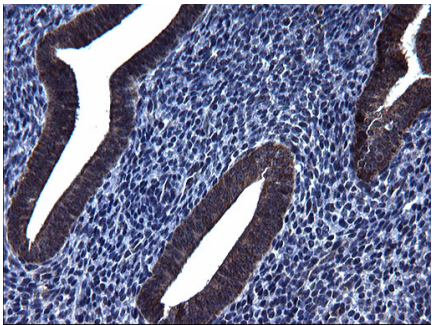
Immunohistochemical staining of paraffin-embedded Human liver tissue within the normal limits using anti-HSCB mouse monoclonal antibody. (Heat-induced epitope retrieval by 1mM EDTA in 10mM Tris, pH8.5, 120°C for 3min, AP93906)



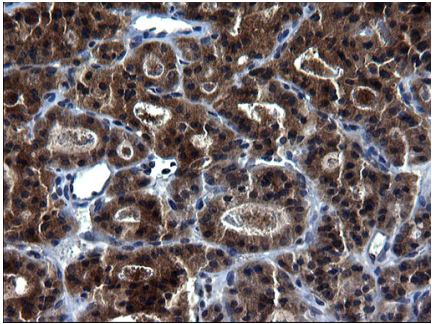
Immunohistochemical staining of paraffin-embedded Adenocarcinoma of Human endometrium tissue using anti-HSCB mouse monoclonal antibody. (Heat-induced epitope retrieval by 1mM EDTA in 10mM Tris, pH8.5, 120°C for 3min, AP93906)



Western blot analysis of extracts (35ug) from 9 different cell lines by using anti-HSCB monoclonal antibody (HepG2: human; HeLa: human; SVT2: mouse; A549: human; COS7: monkey; Jurkat: human; MDCK: canine; PC12: rat; MCF7: human).

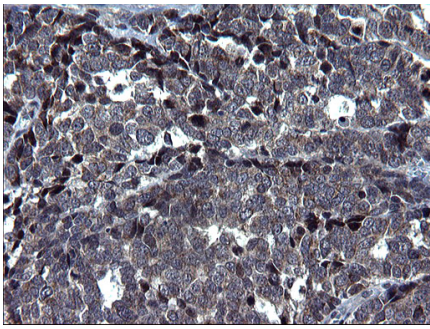


Immunohistochemical staining of paraffin-embedded Human endometrium tissue within the normal limits using anti-HSCB mouse monoclonal antibody. (Heat-induced epitope retrieval by 1mM EDTA in 10mM Tris, pH8.5, 120°C for 3min, AP93906)

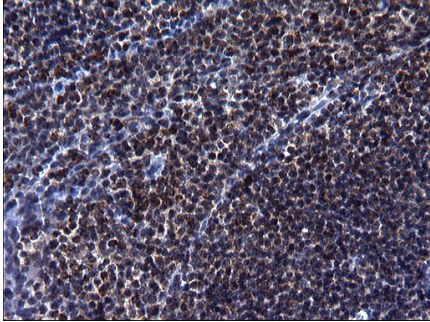


Immunohistochemical staining of paraffin-embedded Carcinoma of Human thyroid tissue using anti-HSCB mouse monoclonal antibody. (Heat-induced epitope retrieval by 1mM EDTA in 10mM Tris, pH8.5, 120°C for 3min, AP93906)

Immunohistochemical staining of paraffin-embedded Adenocarcinoma of Human colon tissue using anti-HSCB mouse monoclonal antibody. (Heat-induced epitope



retrieval by 1mM EDTA in 10mM Tris, pH8.5, 120°C for 3min, AP93906)



Immunohistochemical staining of paraffin-embedded Human lymph node tissue within the normal limits using anti-HSCB mouse monoclonal antibody. (Heat-induced epitope retrieval by 1mM EDTA in 10mM Tris, pH8.5, 120°C for 3min, AP93906)

Please note: All products are 'FOR RESEARCH USE ONLY. NOT FOR USE IN DIAGNOSTIC OR THERAPEUTIC PROCEDURES'.