

HSCB (8B9) Mouse Monoclonal antibody

HSCB (8B9) Mouse Monoclonal antibody

Catalog # AP93905

Product Information

Application	WB
Primary Accession	Q8IWL3
Reactivity	Human
Clonality	Monoclonal
Calculated MW	27422

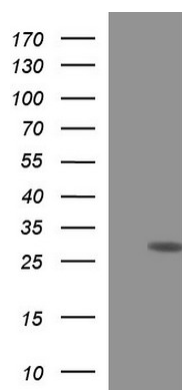
Additional Information

Gene ID	150274
Other Names	Iron-sulfur cluster co-chaperone protein HscB, DnaJ homolog subfamily C member 20, Iron-sulfur cluster co-chaperone protein HscB, cytoplasmic, C-HSC20, Iron-sulfur cluster co-chaperone protein HscB, mitochondrial, HSCB (HGNC:28913), DNAJC20, HSC20
Dilution	WB~~1:1000
Storage Conditions	-20°C

Protein Information

Name	HSCB (HGNC:28913)
Synonyms	DNAJC20, HSC20
Function	[Iron-sulfur cluster co-chaperone protein HscB, mitochondrial]: Acts as a co-chaperone in iron-sulfur cluster assembly in mitochondria (PubMed: 20668094). Required for incorporation of iron- sulfur clusters into SDHB, the iron-sulfur protein subunit of succinate dehydrogenase that is involved in complex II of the mitochondrial electron transport chain (PubMed: 26749241). Recruited to SDHB by interaction with SDHAF1 which first binds SDHB and then recruits the iron-sulfur transfer complex formed by HSC20, HSPA9 and ISCU through direct binding to HSC20 (PubMed: 26749241). Plays an essential role in hematopoiesis (By similarity).
Cellular Location	[Iron-sulfur cluster co-chaperone protein HscB, cytoplasmic]: Cytoplasm
Tissue Location	Expressed in lung, brain, stomach, spleen, ovary, testis, liver, muscle and heart.

Images



HEK293T cells were transfected with the pCMV6-ENTRY control (Left lane) or pCMV6-ENTRY HSCB (Right lane) cDNA for 48 hrs and lysed. Equivalent amounts of cell lysates (5 ug per lane) were separated by SDS-PAGE and immunoblotted with anti-HSCB. Positive lysates (100ug) and (20ug) can be purchased separately from biodragon.

Please note: All products are 'FOR RESEARCH USE ONLY. NOT FOR USE IN DIAGNOSTIC OR THERAPEUTIC PROCEDURES'.