

CCDC27 (11X16) Mouse Monoclonal antibody

CCDC27 (11X16) Mouse Monoclonal antibody

Catalog # AP93903

Product Information

Application	WB
Primary Accession	Q2M243
Reactivity	Human
Clonality	Monoclonal
Calculated MW	75354

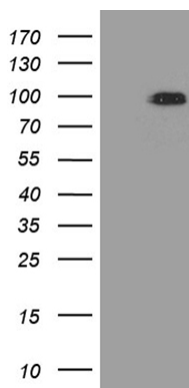
Additional Information

Gene ID	148870
Other Names	Coiled-coil domain-containing protein 27, CCDC27
Dilution	WB~~1:1000
Storage Conditions	-20°C

Protein Information

Name	CCDC27
------	--------

Images



HEK293T cells were transfected with the pCMV6-ENTRY control (Left lane) or pCMV6-ENTRY CCDC27 (Right lane) cDNA for 48 hrs and lysed. Equivalent amounts of cell lysates (5 ug per lane) were separated by SDS-PAGE and immunoblotted with anti-CCDC27 (1:2000). Positive lysates (100ug) and (20ug) can be purchased separately from biodragon.

Please note: All products are 'FOR RESEARCH USE ONLY. NOT FOR USE IN DIAGNOSTIC OR THERAPEUTIC PROCEDURES'.