

ASCC2 (5S8) Mouse Monoclonal antibody

ASCC2 (5S8) Mouse Monoclonal antibody

Catalog # AP93895

Product Information

Application	WB, IF
Primary Accession	Q9H1I8
Reactivity	Rat, Human, Mouse
Clonality	Monoclonal
Calculated MW	86360

Additional Information

Gene ID	84164
Other Names	Activating signal cointegrator 1 complex subunit 2, ASC-1 complex subunit p100, Trip4 complex subunit p100, ASCC2, ASC1P100, RQT3 {ECO:0000303 PubMed:32099016}
Dilution	WB~~1:1000 IF~~1:50~200
Storage Conditions	-20°C

Protein Information

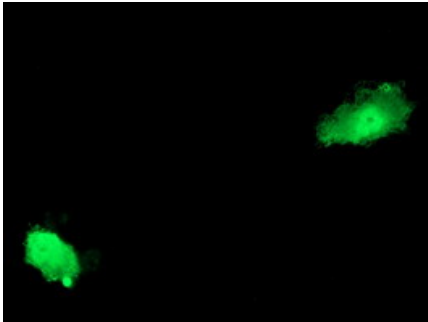
Name	ASCC2
Synonyms	ASC1P100, RQT3 {ECO:0000303 PubMed:32099}
Function	Ubiquitin-binding protein involved in DNA repair and rescue of stalled ribosomes (PubMed: 29144457 , PubMed: 32099016 , PubMed: 32579943 , PubMed: 36302773). Plays a role in DNA damage repair as component of the ASCC complex (PubMed: 29144457). Recruits ASCC3 and ALKBH3 to sites of DNA damage by binding to polyubiquitinated proteins that have 'Lys-63'-linked polyubiquitin chains (PubMed: 29144457). Part of the ASC-1 complex that enhances NF-kappa-B, SRF and AP1 transactivation (PubMed: 12077347). Involved in activation of the ribosome quality control (RQC) pathway, a pathway that degrades nascent peptide chains during problematic translation (PubMed: 32099016 , PubMed: 32579943 , PubMed: 36302773). Specifically recognizes and binds RPS20/uS10 ubiquitinated by ZNF598, promoting recruitment of the RQT (ribosome quality control trigger) complex on stalled ribosomes, followed by disassembly of stalled ribosomes (PubMed: 36302773).
Cellular Location	Nucleus. Nucleus speckle Note=Colocalizes with the spliceosomal components PRPF8 and SNRNP200/BRR2 in nuclear foci when cells have been exposed to alkylating agents that cause DNA damage. Colocalizes with

RNF113A and 'Lys-63'-linked polyubiquitinated proteins, ALKBH3 and ASCC3 in nuclear foci when cells have been exposed to alkylating agents that cause DNA damage.

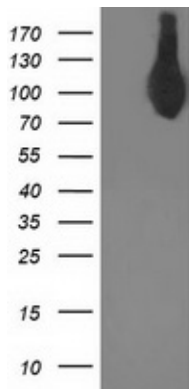
Tissue Location

Ubiquitous..

Images



Anti-ASCC2 mouse monoclonal antibody (AP93895) immunofluorescent staining of COS7 cells transiently transfected by pCMV6-ENTRY ASCC2.



HEK293T cells were transfected with the pCMV6-ENTRY control (Left lane) or pCMV6-ENTRY ASCC2 (Right lane) cDNA for 48 hrs and lysed. Equivalent amounts of cell lysates (5 ug per lane) were separated by SDS-PAGE and immunoblotted with anti-ASCC2. Positive lysates (100ug) and (20ug) can be purchased separately from biodragon.

Please note: All products are 'FOR RESEARCH USE ONLY. NOT FOR USE IN DIAGNOSTIC OR THERAPEUTIC PROCEDURES'.