

ASCC2 (13J8) Mouse Monoclonal antibody

ASCC2 (13J8) Mouse Monoclonal antibody

Catalog # AP93894

Product Information

Application	WB, IF
Primary Accession	Q9H1I8
Reactivity	Rat, Human, Mouse
Clonality	Monoclonal
Calculated MW	86360

Additional Information

Gene ID	84164
Other Names	Activating signal cointegrator 1 complex subunit 2, ASC-1 complex subunit p100, Trip4 complex subunit p100, ASCC2, ASC1P100, RQT3 {ECO:0000303 PubMed:32099016}
Dilution	WB~~1:1000 IF~~1:50~200
Storage Conditions	-20°C

Protein Information

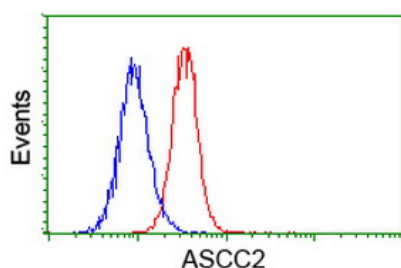
Name	ASCC2
Synonyms	ASC1P100, RQT3 {ECO:0000303 PubMed:32099}
Function	Ubiquitin-binding protein involved in DNA repair and rescue of stalled ribosomes (PubMed: 29144457 , PubMed: 32099016 , PubMed: 32579943 , PubMed: 36302773). Plays a role in DNA damage repair as component of the ASCC complex (PubMed: 29144457). Recruits ASCC3 and ALKBH3 to sites of DNA damage by binding to polyubiquitinated proteins that have 'Lys-63'-linked polyubiquitin chains (PubMed: 29144457). Part of the ASC-1 complex that enhances NF-kappa-B, SRF and AP1 transactivation (PubMed: 12077347). Involved in activation of the ribosome quality control (RQC) pathway, a pathway that degrades nascent peptide chains during problematic translation (PubMed: 32099016 , PubMed: 32579943 , PubMed: 36302773). Specifically recognizes and binds RPS20/uS10 ubiquitinated by ZNF598, promoting recruitment of the RQT (ribosome quality control trigger) complex on stalled ribosomes, followed by disassembly of stalled ribosomes (PubMed: 36302773).
Cellular Location	Nucleus. Nucleus speckle Note=Colocalizes with the spliceosomal components PRPF8 and SNRNP200/BRR2 in nuclear foci when cells have been exposed to alkylating agents that cause DNA damage. Colocalizes with

RNF113A and 'Lys-63'-linked polyubiquitinated proteins, ALKBH3 and ASCC3 in nuclear foci when cells have been exposed to alkylating agents that cause DNA damage.

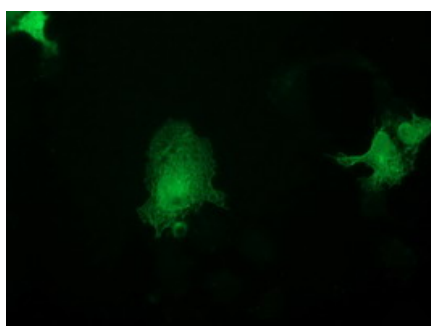
Tissue Location

Ubiquitous..

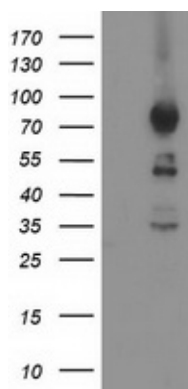
Images



Flow cytometric Analysis of Hela cells, using anti-ASCC2 antibody (AP93894), (Red), compared to a nonspecific negative control antibody , (Blue).



Anti-ASCC2 mouse monoclonal antibody (AP93894) immunofluorescent staining of COS7 cells transiently transfected by pCMV6-ENTRY ASCC2.



HEK293T cells were transfected with the pCMV6-ENTRY control (Left lane) or pCMV6-ENTRY ASCC2 (Right lane) cDNA for 48 hrs and lysed. Equivalent amounts of cell lysates (5 ug per lane) were separated by SDS-PAGE and immunoblotted with anti-ASCC2(Cat# AP93894). Positive lysates (100ug) and (20ug) can be purchased separately from biodragon.

Please note: All products are 'FOR RESEARCH USE ONLY. NOT FOR USE IN DIAGNOSTIC OR THERAPEUTIC PROCEDURES'.