

# RSG1 (18P2) Mouse Monoclonal antibody

RSG1 (18P2) Mouse Monoclonal antibody

Catalog # AP93892

## Product Information

---

Application	WB
Primary Accession	<a href="#">Q9BU20</a>
Reactivity	Human
Clonality	Monoclonal
Calculated MW	28498

## Additional Information

---

Gene ID	79363
Other Names	Ciliogenesis and planar polarity effector 2, REM2- and Rab-like small GTPase 1, CPLANE2 ( <a href="#">HGNC:28127</a> )
Dilution	WB~~1:1000
Storage Conditions	-20°C

## Protein Information

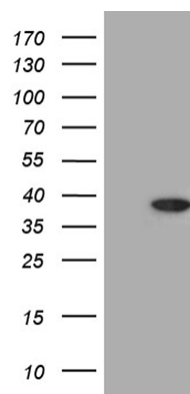
---

Name	CPLANE2 ( <a href="#">HGNC:28127</a> )
Function	Required for efficient primary cilia initiation, regulating a late step in cilia initiation. Plays a role in the final maturation of the mother centriole and ciliary vesicle that allows extension of the ciliary axoneme.
Cellular Location	Cytoplasm, cytoskeleton, cilium basal body. Cytoplasm, cytoskeleton, microtubule organizing center, centrosome, centriole Note=Localizes at the transition zone, a region between the basal body and the ciliary axoneme (PubMed:29038301). Recruitment to the centriole depends on TTBK2, INTU, and its own GTPase activity (By similarity) {ECO:0000250   UniProtKB:A2A825, ECO:0000269   PubMed:29038301}

## Images

---

HEK293T cells were transfected with the pCMV6-ENTRY control (Left lane) or pCMV6-ENTRY RSG1 (Right lane) cDNA for 48 hrs and lysed. Equivalent amounts of cell lysates (5 ug per lane) were separated by SDS-PAGE and immunoblotted with anti-RSG1 (Cat# AP93892)(1:500).



Positive lysates (100ug) and (20ug) can be purchased separately from biodragon.

Please note: All products are 'FOR RESEARCH USE ONLY. NOT FOR USE IN DIAGNOSTIC OR THERAPEUTIC PROCEDURES'.