

KBTBD4 (5G8) Mouse Monoclonal antibody

KBTBD4 (5G8) Mouse Monoclonal antibody

Catalog # AP93883

Product Information

Application	WB, IHC
Primary Accession	Q9NVX7
Reactivity	Human, Mouse
Clonality	Monoclonal
Calculated MW	59904

Additional Information

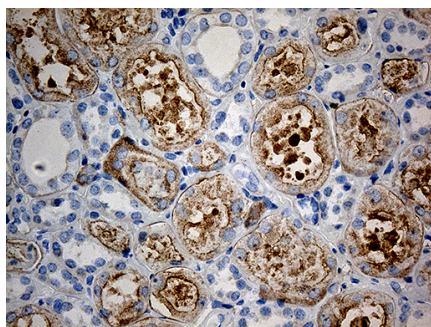
Gene ID	55709
Other Names	Kelch repeat and BTB domain-containing protein 4, BTB and kelch domain-containing protein 4, KBTBD4, BKLHD4
Dilution	WB~~1:1000 IHC~~1:100~500
Storage Conditions	-20°C

Protein Information

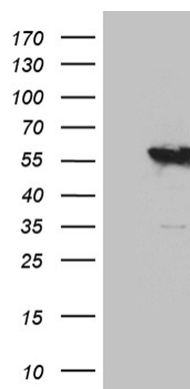
Name	KBTBD4
Synonyms	BKLHD4
Function	Substrate-specific adapter of a BCR (BTB-CUL3-RBX1) E3 ubiquitin ligase complex which targets CoREST corepressor complex components RCOR1, KDM1A/LSD1 and HDAC2 for proteasomal degradation (PubMed: 33417871). RCOR1 is likely to be the primary target while degradation of KDM1A and HDAC2 is likely due to their association with RCOR1 (PubMed: 33417871). Also targets RCOR3, MIER2 and MIER3 for proteasomal degradation as well as associated proteins ZNF217 and RREB1 (PubMed: 36997086). Degradation is dependent on the presence of an ELM2 domain in the target proteins (PubMed: 36997086).

Images

Immunohistochemical staining of paraffin-embedded Human Kidney tissue within the normal limits using anti-KBTBD4 mouse monoclonal antibody. (Heat-induced epitope retrieval by 1mM EDTA in 10mM Tris buffer



(pH8.5) at 120°C for 3min, AP93883) (1:500)



HEK293T cells were transfected with the pCMV6-ENTRY control (Left lane) or pCMV6-ENTRY KBTBD4 (Right lane) cDNA for 48 hrs and lysed. Equivalent amounts of cell lysates (5 ug per lane) were separated by SDS-PAGE and immunoblotted with anti-KBTBD4 antibody (Cat# AP93883). Positive lysates (100ug) and (20ug) can be purchased separately from biodragon.

Please note: All products are 'FOR RESEARCH USE ONLY. NOT FOR USE IN DIAGNOSTIC OR THERAPEUTIC PROCEDURES'.