

EBLN2 (3L17) Mouse Monoclonal antibody

EBLN2 (3L17) Mouse Monoclonal antibody

Catalog # AP93882

Product Information

Application	WB
Primary Accession	Q6P2I7
Reactivity	Human
Clonality	Monoclonal
Calculated MW	30450

Additional Information

Gene ID	55096
Other Names	Endogenous Bornavirus-like nucleoprotein 2, Endogenous Borna-like N element-2, EBLN-2, EBLN2
Dilution	WB~~1:1000
Storage Conditions	-20°C

Protein Information

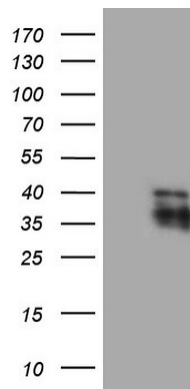
Name	EBLN2
Function	May act as an RNA-binding protein. The C-terminal region is highly homologous to the bornavirus nucleocapsid N protein that binds viral RNA and oligomerizes. The viral protein also possesses a nuclear import and a nuclear export signal. These 2 signals seem absent in EBLN-2 supporting an unrelated function in Human.

Background

May act as an RNA-binding protein. The C-terminal region is highly homologous to the bornavirus nucleocapsid N protein that binds viral RNA and oligomerizes. The viral protein also possesses a nuclear import and a nuclear export signal. These 2 signals seem absent in EBLN-2 supporting an unrelated function in Human. [UniProtKB/Swiss-Prot Function]

Images

HEK293T cells were transfected with the pCMV6-ENTRY control (Left lane) or pCMV6-ENTRY EBLN2 (Right lane) cDNA for 48 hrs and lysed. Equivalent amounts of cell



lysates (5 ug per lane) were separated by SDS-PAGE and immunoblotted with anti-EBLN2 (1:500). Positive lysates (100ug) and (20ug) can be purchased separately from biodragon.

Please note: All products are 'FOR RESEARCH USE ONLY. NOT FOR USE IN DIAGNOSTIC OR THERAPEUTIC PROCEDURES'.